

FREECOM Network MediaPlayer Drive-In Kit



MANUAL

Rev. 520

Freecom

Dear customer,

Thank you for buying the Freecom Network MediaPlayer-35 drive-in kit, a brand-new digital multimedia player that supports dual data access mode via 3.5" HDD inside (not supplied) and 10/100Mbps Network. With this player you can easily enjoy Digital Movies, Digital Music, Digital Photos from a 3.5" HDD (when assembled in the device) and from all PC's in your network, directly on your TV or HiFi set.

Freecom Technologies • Germany
www.freecom.com

Warning !

All rights reserved. The products named in this manual are only used for identification purposes and may be trademarks or registered trademarks of the respective companies. This device was designed for home or office use.

Warning! This device is equipment complying with EN55022 class A. This equipment can cause radio disturbances in a residential area. If this is the case, the user has to take appropriate measures and assume all responsibility and costs for. It may not be used near or with any life-sustaining systems.

Freecom Technologies is not liable for any damages that may occur from the use of a Freecom system. All rights reserved. We reserve the right to upgrade our products in keeping with technological advances.

Users manual

General Information	page 4
Warnings and Safety Instructions	page 6
Product Overview	page 8

Chapter 1:

Use as External USB HDD	page 10
-------------------------------	---------

Chapter 2:

Access PC via Network	page 31
-----------------------------	---------

Chapter 3:

Use as Multimedia Player	page 49
--------------------------------	---------

Technical Specifications	page 77
--------------------------------	---------

Introduction

- Dual Data Access Mode via 10/100Mbps LAN and 3.5" HDD (when assembled in the device)
- Digital Multimedia Player via Home TV or Car TV
- USB 2.0 External Storage via PC (NTFS, FAT32)
- Audio - Stereo, Digital Coaxial & Optical 5.1ch. Sound
- Video - Composite, S-Video, HD Component 480p, 720p, 1080i
- DVD Manager - Playback of DVD File same as Original DVD Title
- Firmware upgradeable.

Package Content

Please check the contents of the box. The following should be supplied:

- Freecom Network MediaPlayer-35 drive in kit, footstand
- Remote Control & Battery
- Composite + Stereo L-R Cable
- USB Cable
- LAN Cable
- Power Adapter
- CD with manual and, USB 2.0 Driver for WIN98SE

Minimum System Requirements

USB Requirements

- Windows 98SE, ME, 2000, XP/MAC OS X 10.1 or higher/Linux 2.4.x or higher
- Available USB 2.0, 1.1 Port (USB 2.0 recommended)*

Network Requirements

- Windows 98SE, ME, 2000, XP
- Available 10/100 Ethernet LAN Port, RJ-45 (100Mbps recommended)
- LAN Cable (cross-wired or standard - see Page 28 2.1)

Hardware Requirements

- Pentium III 500MHz or faster
- At least 128 MB RAM
- USB interface (USB 1.1 or USB 2.0*)
- A CD-ROM drive or internet connection for driver installation
- For playback on TV, a TV with PAL or NTSC system is required.
- Support HDD: Compatible with standard 3.5" IDE Hard Drive

* USB 2.0 is downwards compatible to USB 1.1. To achieve optimal performance from the Freecom Network MediaPlayer-35 drive in kit your PC should be equipped with an USB 2.0 port. USB 2.0 PCI Host Controllers are separately available at www.freecom.com.

Precautions

- We strongly recommend you to regularly back up the data from the hard drive that you have built in, to another safe media. Freecom can never be held responsible for data damage or data loss of the built-in HDD.
- Unplug the power adaptor when you don't use the device for a longer period time.
- The device does not support DivX, XviD codec of video files that has GMC, Qpel option.
- Do not turn off the power when a file is playing.
- We recommend (when connected to PC) that you use a USB cable not longer than 3 meters.
- If you have USB 1.1 Host Adapter, the device will be working at USB1.1 speed.
- When using a hard drive with less than 6GB storage capacity, you may experience data damage or data loss. We recommend you to use a harddrive of more than 6GB.

Note: Be sure to format the Hard Drive before using the device. When you use an unformatted HDD, a PC will not detect the device.

Warnings and Safety Instructions

Please read and follow the below mentioned instructions. They should be observed in order to prevent injury to the user, damage to the device and damage to property, as well as to ensure safe use of the product. Not following these instructions may cause the unit to malfunction.

To ensure that your Freecom Network MediaPlayer-35 drive in kit functions properly, please take note of the following precautions. If these are not followed, you may void your warranty and damage the Freecom Network MediaPlayer-35 drive in kit.

- Safely remove the Freecom Network MediaPlayer-35 drive in kit via your operating system (the "unplug or eject hardware" option in the Windows taskbar) before disconnecting the USB cable or power cable and before switching off the device. Failing to do so may result in data loss.
- Do not disconnect the Freecom Network MediaPlayer-35 drive in kit from the PC during file transfer. This may result in data loss and an error on the player. If this occurs, please run the ScanDisk utility.

- Do not drop the Freecom Network MediaPlayer-35 drive in kit or expose it to other kinds of sudden mechanical shocks as this may result in data loss and damage to the hard drive.
- Do not use the Freecom Network MediaPlayer-35 drive in kit when the ambient temperature is below 10°C or above 45°C.
- If the Freecom Network MediaPlayer-35 drive in kit is moved from a cool environment to a warmer environment, please allow the drive to acclimatize to the ambient temperature before operating the device. Failing to do so may lead to condensation within the drive enclosure, which in turn may cause the drive to malfunction.
- Do not place liquids or drinks on the Freecom Network MediaPlayer-35 drive in kit. When liquids are spilled and get in contact with the electronics within the drive enclosure, it will damage the drive and will cause the drive to malfunction.
- Do not use the Freecom Network MediaPlayer-35 drive in kit in a dusty environment. Dust inside the enclosure may damage the internal electronics and result in drive malfunction.
- Do not use the Freecom Network MediaPlayer-35 drive in kit near magnetic fields.
- Opening the Freecom Network MediaPlayer-35 drive in kit will void the warranty.
- The Network MediaPlayer-35 drive in kit may generate heat when used for a longer period of time.

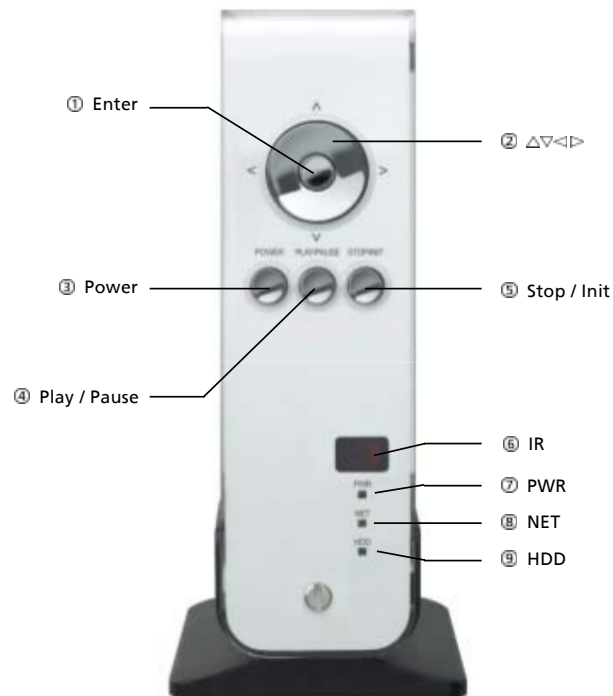
Furthermore, warranty does not apply to:

- Damages or problems resulting from misuse, abuse, accident, alteration or incorrect electrical current or voltage.
- Any product tampered-with or damaged warranty seal or serial number label.
- Any product without a warranty or serial number label.
- Batteries and any consumable items delivered with or in the equipment.

Product Overview

1. FRONT VIEW

All basic operation functions can be done with the buttons on the device without use of the remote control.



- | | |
|--|---|
| ① ENTER | Select or play a file |
| ② $\Delta \nabla \triangleleft \triangleright$ | Navigation Key, Up, Down, Left, Right |
| ③ POWER | Power On, Off |
| ④ PLAY / PAUSE | Play all files from selected file / Pause |
| ⑤ STOP / INIT | Stop / Return to Mode Selection Screen |
| ⑥ IR | IR receiving area for remote signals |
| ⑦ PWR | Power LED |
| ⑧ NET | Network LED |
| ⑨ HDD | HDD LED |

2. BACK VIEW



- | | |
|--------------|--|
| ① IR-EXT | Connect external remote control IR receiver |
| ② USB | Connect USB cable |
| ③ OPTICAL | Connect Optical cable for 5.1 ch. digital audio output |
| ④ S-VIDEO | Connect s-video for video output |
| ⑤ COAXIAL | Connect coaxial cable for 5.1 ch. digital audio output |
| ⑥ Y, PB, PR | Connect component Y, Pb, Pr cable for video output |
| ⑦ LAN | Connect lan cable for networking |
| ⑧ PWR | Connect power cable |
| ⑨ CVBS | Connect composite cable for video output |
| ⑩ STEREO L-R | Connect stereo cable for audio output |

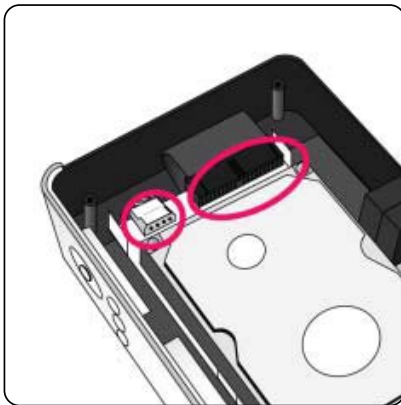
Chapter 1: Use as External USB HDD

1.1 Insert Hard Disk

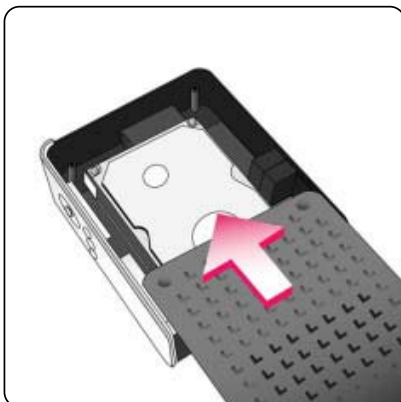
- Only use a 3.5" IDE Hard Disk for Desktop.
- Hard Disk should be jumpered as "Master". However, if the Hard Disk supports "Single" mode, you need to try to set "Single" mode.



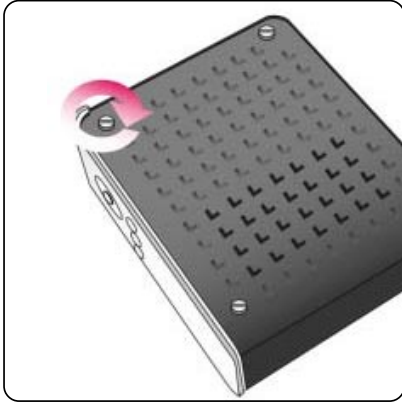
1. Unscrew the 4 screws and open the cover by sliding it in the direction of the arrow



2. Connect Power and IDE 40-pin connector to Hard Disk.



3. Close the cover by sliding it in the direction of the arrow.



4. Put the 4 screws back

1.2 Connecting the player to the PC

1. Connect the USB cable to the player and connect the power adapter to the DC jack on the player.
2. Connect the adapter into an AC outlet.
3. Connect the player to the PC's USB port.
4. Switch the power on by pressing the power on-off button on the player
5. Windows 2000 and Windows XP will recognize the player as a USB drive automatically; you can use the player without installing a driver.

Note: for use under Windows98SE, you have to install the USB2.0 driver from the manual CD.

6. If the player is not recognized or detected, please check if the USB connector is properly connected to the device and the PC.

1.3 Format the Built-in HDD via USB

If the assembled HDD is not formatted, a PC will not detect the hard disk drive. If your harddisk is not formatted, follow the below mentioned instructions. If the hard disk drive is already formatted, you can discard below steps and go to "1.4 Copy Data via USB".

File System features

Please refer to the tables below for an overview:

File systems supported by different operating systems

Operating system \ File system	FAT	FAT32	NTFS
Windows 98SE	yes	yes	not supported
Windows ME	yes	yes	not supported
Windows 2000	yes	yes	yes
Windows XP	yes	yes	yes

Maximum size of a partition

Operating system \ File system	FAT	FAT32	NTFS
Windows 98SE	2 GB	60 GB ^{*1, 2}	n.a.
Windows ME	2 GB	2 TB ^{*2}	n.a.
Windows 2000	4 GB ^{*3}	32 GB	16 TB
Windows XP	4 GB ^{*3}	32 GB	16 TB

Example for different partitions with different file systems on one Network MediaPlayer-35 drive in kit

Total size of the Drive \ File system	NTFS	FAT32
120 GB	90GB	30 GB

The example above is a good solution for Windows 2000/XP users who sometimes exchange data with Windows 98SE/ME PCs.

For storing the data under Windows 2000/XP both partitions can be used. As the NTFS file system is not recognized by Windows 98SE/ME data to be used on these operating systems must be stored on the FAT32 partition.

Please follow the steps below to adapt the Network MediaPlayer-35 drive in kit for your needs.

*1: A patch for Windows 98SE is required for hard disk larger than 60 GB. Further information and an update to fix this problem can be found in article 263044 of the "Microsoft Knowledge Base" on the Microsoft Website under <http://support.microsoft.com>.

*2: Hard disk capacity will not be displayed correctly by fdisk!

*3: FAT partitions larger than 2 GB can only be administrated by Windows 2000/XP.

1.3.1 Partitioning your Network MediaPlayer-35 drive in kit under Windows 98SE / Windows ME

Windows 98SE only: The fdisk version which is installed together with your operating system does not recognize the correct size of hard disks larger than 64 GB.

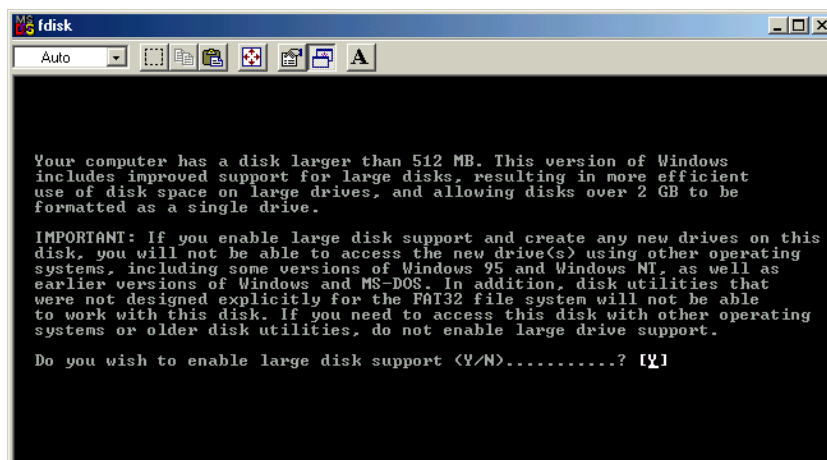
Windows 98SE/ME: For large partitions fdisk will not display the partition size correctly! Please ignore this as the partitioning results will still be OK.

Further information and an update to fix this problem can be found in article 263044 of the "Microsoft Knowledge Base" on the Microsoft Website under <http://support.microsoft.com>.

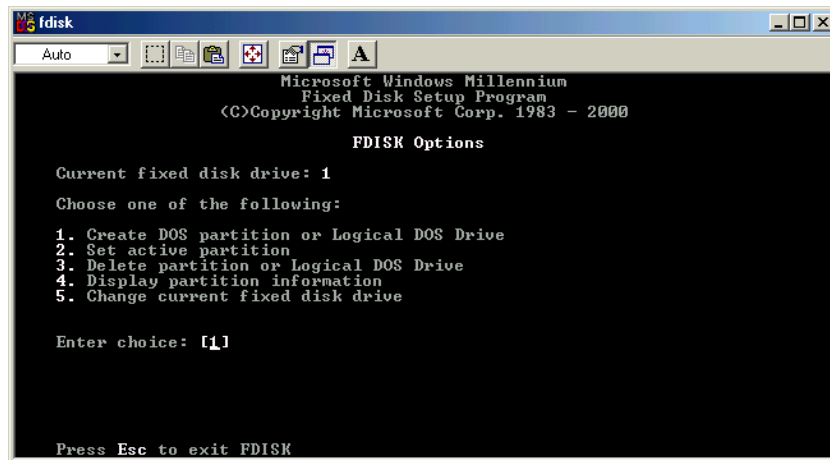
Creating a partition on the Network MediaPlayer-35 drive in kit under Windows 98 SE / ME

The following steps will guide you the process of creating partitions on your Network MediaPlayer-35 drive in kit under Windows 98SE/ME. After this procedure your Freecom Network MediaPlayer-35 drive in kit will be ready for use and it will be allocated a drive letter.

1. Click on the "Start" button.
2. Select "Run".
3. Enter "fdisk" and confirm with "OK".
4. Answer the question "Do you wish to enable large disk support?" by pressing the 'Return' key. FAT32 is now activated.

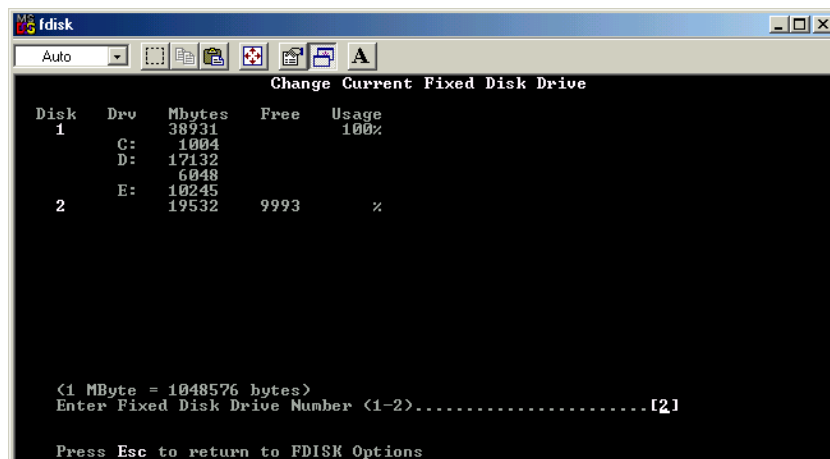


5. Choose Option "5 (Change current fixed disk drive)" by pressing '5' and 'Return'.



6. Select the hard disk by its number where the "Usage" contains no value but only a percent symbol. Select the number of the corresponding hard disk and confirm by pressing the "Return" key.

Now your hard disk is activated and ready to be partitioned.

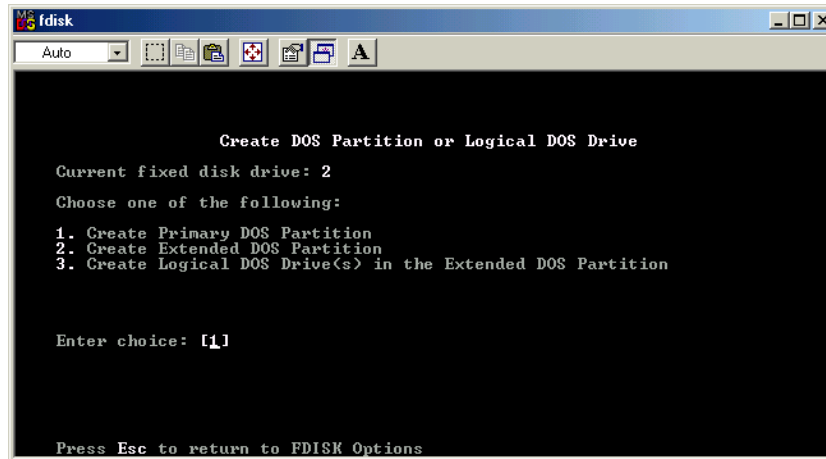


Note: Partition size of large hard disks will not be displayed correctly! However partitioning results will be OK.

7. Select Option 1 "(Create DOS partition or Logical DOS drive)" by pressing '1' and confirm with 'Return'.

8. Select Option 1 "(Create primary DOS partition)" by pressing '1' and confirm with 'Return'.

Wait until drive integrity is completely checked.



9. If only one partition is required then answer "Y" to the question: "Do you wish to use the maximum available size for a Primary DOS partition?" If more than one partition is required go to the next section "Create two or more partitions on the Network MediaPlayer-35 drive in kit under Windows 98 / Windows ME".

Now the whole disk will be partitioned as one primary partition. Wait until the drive integrity check is completed.

10. Press the 'ESC' key to return to the fdisk options.
11. Now press the 'ESC' key to close the "fdisk window". Your hard disk is now partitioned.
12. Stop your hard disk by using the hot unplug icon in the lower right corner of your screen and remove the USB cable from your hard disk. Afterwards connect your hard disk again with your computer. The hard disk will now be recognized by Windows.

As Windows tries to access your hard disk an error message will appear. This happens, because your hard disk is not yet formatted.

Creating two or more partitions on the Network MediaPlayer-35 drive in kit under Windows 98SE / ME

1. Repeat steps 1 to 7 from the previous chapter (Create one partition on the Network MediaPlayer-35 drive in kit under Windows 98SE/Windows ME).
2. Answer the question "Do you wish to use the maximum available size for a primary DOS partition?" with "N".
3. Enter either the size or a percentage value for the partition size. Press 'Return' and wait until the drive integrity check is completed.

4. Press the 'ESC' key to return to the fdisk options.
5. Select Option 1 "(Create DOS partition or Logical DOS drive)" by pressing '1' and confirm with 'Return'.
6. Select Option 2 "(Create Extended DOS Partition)" by pressing '2' and confirm with 'Return'. Wait until the drive integrity check is completed.
7. Enter either the size or a percentage value for the partition size or press 'Return' to accept the default value.
8. Press 'ESC' to return and wait until the drive integrity check is completed.
9. A logical drive needs to be defined now. Enter the size of the logical drive and press 'Return' or accept the default value by pressing 'Return'.
10. Press 'ESC' to return to the fdisk options.
11. Now press the 'ESC' key to close the "fdisk window". Your hard disk is now partitioned.
12. Stop your hard disk by using the hot unplug icon in the lower right corner of your screen and remove the USB cable from your hard disk. Afterwards connect your hard disk again with your computer. The hard disk will now be recognized by Windows.

As Windows tries to access your hard disk an error message will appear. This happens, because your hard disk is not yet formatted.

Formatting partitions on the Network MediaPlayer-35 drive in kit under Windows 98SE / ME

1. Double-click on the "My Computer" icon on your desktop.
2. Click with the right mouse button on the drive symbol of your Network MediaPlayer-35 drive in kit. Now a menu will appear where you can choose the option "Format".
3. Please perform a complete formatting of your drive. You can also assign a name to your drive here.
4. After you have completed your selection, click on "Start".

Attention: Selecting the wrong drive will lead to a loss of your data. Please ensure that the correct drive is selected!

5. Confirm the next message with "OK".
6. After formatting is finished you can perform a disk scan. To do so, follow the instructions of the Windows Help system. If you don't want to scan your disk, just close the message window.

Repeat these steps for each partition if more than one partition was created.

Now your Network MediaPlayer-35 drive in kit is ready for use. You can use it like an internal hard disk for storing your data.

Deleting a partition on the Network MediaPlayer-35 drive in kit under Windows 98SE / ME

GB

1

The following steps will explain how to delete a partition on your Network MediaPlayer-35 drive in kit.

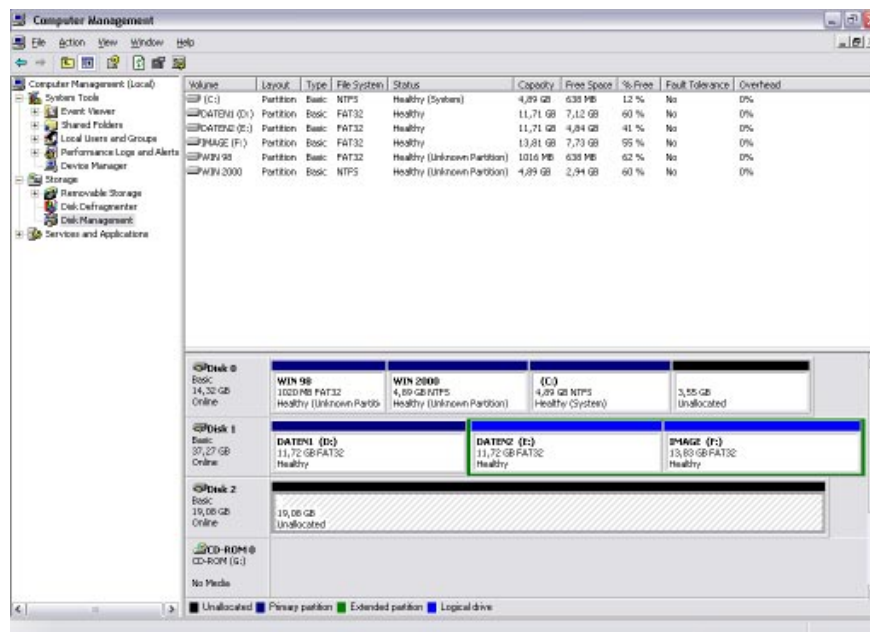
1. Click on the "Start" button.
2. Select "Run".
3. Enter "fdisk" and confirm with "OK".
4. fdisk will be started. Answer the question "Do you wish to enable large disk support?" by pressing the 'Return' key. FAT32 is now activated.
5. Choose Option 5 "(Change current fixed disk drive)" by pressing '5' and 'Return'.
6. Select the hard disk to be deleted by its number. ATTENTION: Please make sure that the correct drive is selected. Selecting the wrong drive will lead to a loss of your data!
7. Choose Option "3 (Delete partition or Logical DOS Drive)" by pressing '3' and 'Return'.
8. Select the partition to be deleted by pressing its number and 'Return'.
9. Enter the drive label and press 'Return'.
10. Confirm with 'Y' and 'Return' to delete the partition.
11. Press the 'ESC' key to return to the fdisk options.
12. Press 'ESC' to exit fdisk. Stop your hard disk by using the hot unplug icon in the lower right corner of your screen and remove the USB cable from your hard disk. Afterwards connect your hard disk again with your computer. The hard disk will now be recognized by Windows.

1.3.2 Partitioning your Network MediaPlayer-35 drive in kit under Windows XP / 2000

Creating a partition on the Network MediaPlayer-35 drive in kit under Windows XP / 2000

The following steps will guide you through the process of creating partitions on your Network MediaPlayer-35 drive in kit. After this procedure your Freecom Network MediaPlayer-35 drive in kit will be ready for use and it will be allocated a drive letter.

1. Click with the right mouse button on the "My Computer" icon on your desktop.
2. Select the option "Manage".
3. Select the option "Storage" -> "Disk Management".
4. Choose the hard disk, which is "unallocated". Ensure that the entire drive is "unallocated".



- Click with the right mouse button on the "unallocated" area and select the option "New Partition" (Windows 2000: "Create Partition Wizard"). The "New Partition Wizard" opens. Click on "Next".



- Select "Primary partition" and click on "Next".



7. Now you can adjust the size of your partition. Click on "Next" if only one partition is to be created. See next chapter (Creating two or more partitions on the Network MediaPlayer-35 drive in kit under Windows XP/2000) how to create more than one partition.



8. Assign a drive letter to your hard disk. Normally you can use the default options. Click on "Next".
9. Select the formatting option. Choose either "FAT32" or "NTFS", the "Allocation Unit Size" should remain on "Default". Finally select "Perform Quick Format" and click on "Next".

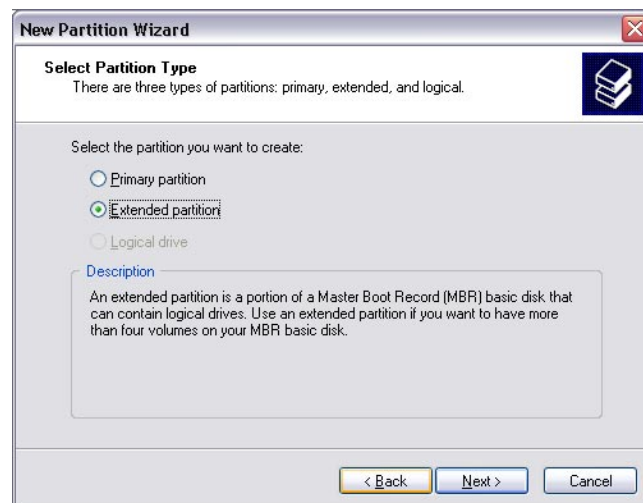


10. Click on "Finish" to complete the partitioning of your Network MediaPlayer-35 drive in kit. Your Network MediaPlayer-35 drive in kit will be formatted now and is ready-to-use afterwards.



Creating two or more partitions on the Network MediaPlayer-35 drive in kit under Windows XP / 2000

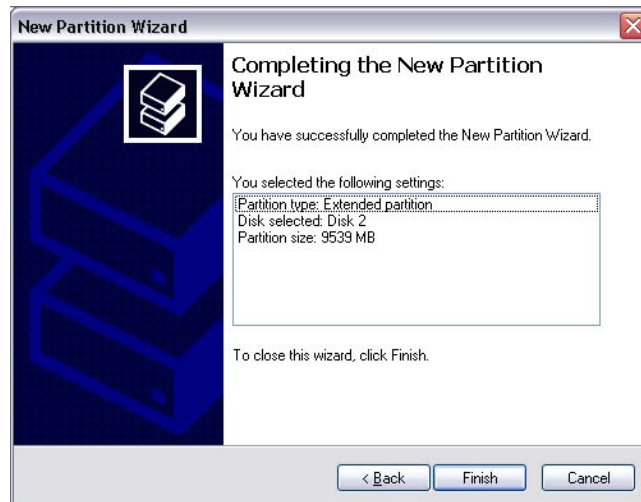
1. Repeat the steps from the previous chapter (Creating a partition on the Network MediaPlayer-35 drive in kit under Windows XP/2000) for creating the first partition.
2. Click with the right mouse button on the "My Computer" icon on your desktop.
3. Select the option "Manage".
4. Select the option "Storage" -> "Disk Management".
5. Right-click on the unallocated space of your Network MediaPlayer-35 drive in kit and select the option "New partition" (Windows 2000: "Create partition"). The "New Partition Wizard" (Windows 2000: "Create Partition Wizard") opens. Click on "Next".
6. Select "Extended partition" and click on "Next".

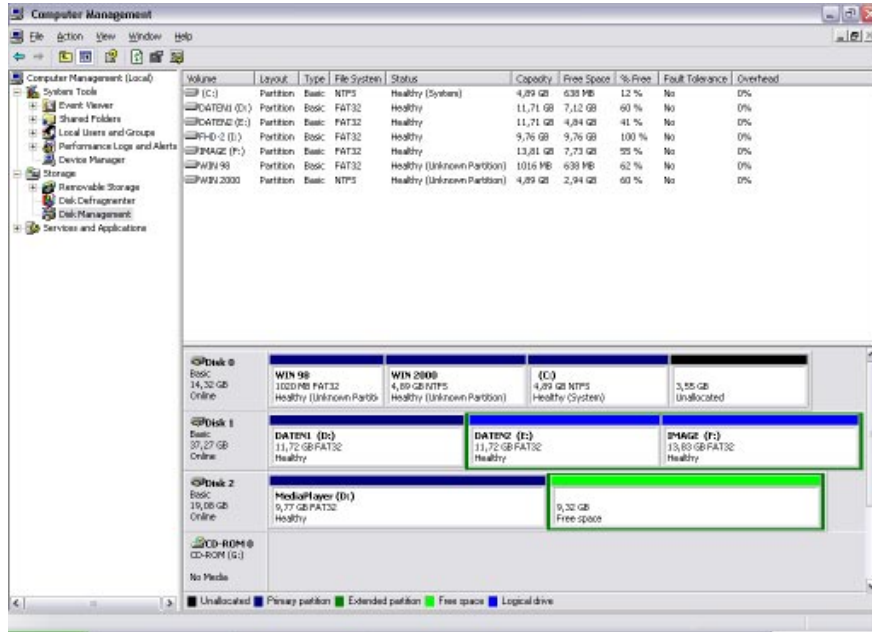


7. Now you can adjust the size of your partition. Enter the size and click on "Next".

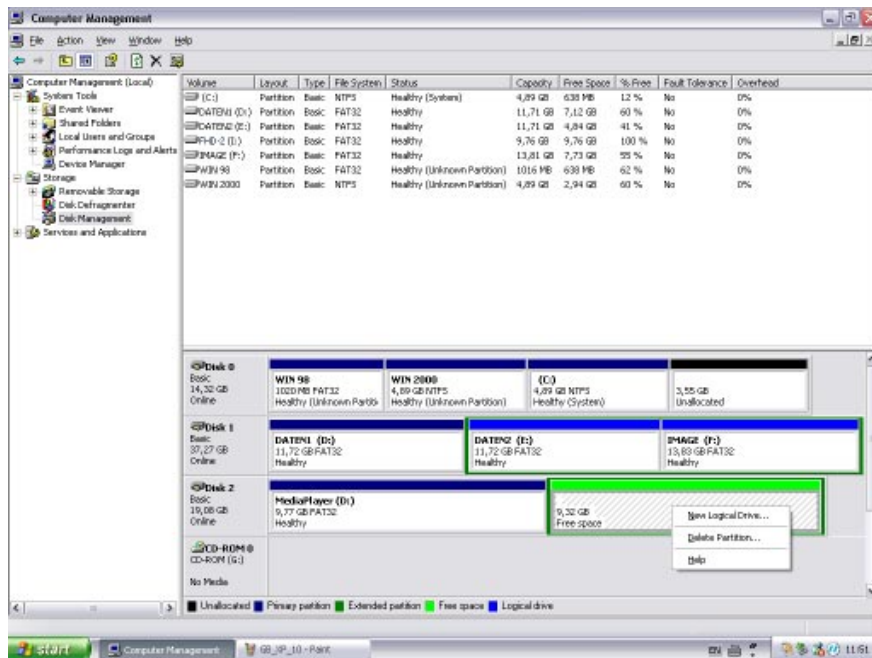


8. Click on "Finish" to create the "Extended partition". The unallocated space now changed to "Free space".





- Right-click on "Free Space" and select "New Logical Drive" (Windows 2000: "Create Logical Drive"). The "New Partition Wizard" (Windows 2000: "Create Partition Wizard") opens. Click on "Next".



10. "Logical drive" is already selected. Click on "Next".
11. Specify the partition size and click on "Next".
12. Assign a drive letter and click on "Next".
13. Select the formatting option. Choose either "FAT32" or "NTFS", the "Allocation Unit Size" should remain on "Default". Finally select "Perform Quick Format" and click on "Next".
14. Click on "Finish" to complete partitioning. Your partition will be formatted now and is ready-to-use.

Deleting a partition on the Network MediaPlayer-35 drive in kit under Windows XP / 2000

1. Click with the right mouse button on the "My Computer" icon on your desktop.
2. Select the option "Manage".
3. Select the option "Storage" -> "Disk Management".
4. Choose your external hard drive and right-click on the partition.
5. Select "Delete Partition" and confirm by clicking on "Yes". The partition will be deleted now.

1.4 Copy Data via USB

You can use the device as an external USB hard drive when you have assembled a hard disk into it. You can copy data from your PC to the built-in HDD of the player via USB. These files (when they are audio, video or photos) you can play back directly from the device on a TV or HiFi set.

When connecting to PC, you have to connect the power cable to a power outlet.

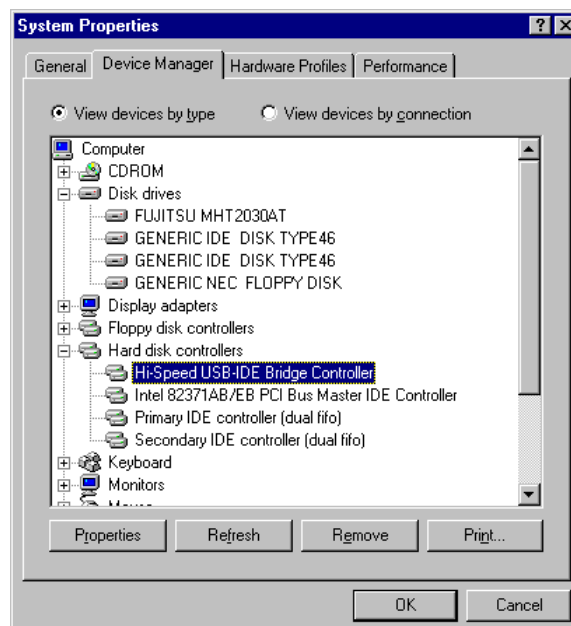
1.4.1 Windows 98SE

First, you have to install Windows 98 Driver before connecting PC.

- **Insert the Manual & Application CD into your CD drive. The Freecom start menu opens. (In case the software does not open automatically, please click on "Start" in the main directory of the CD.)**
- **Click on "Driver (Win 98)".**

After finishing installation, connect the player to the PC via USB cable, and plug power cable to a power outlet.

1. After installing the driver, connect the player and plug power cable. And then, check the driver installation at Windows [Start > Settings > Control Panel > System > Device Manager > Hard disk controllers > Hi-Speed USB-IDE Bridge Controller].



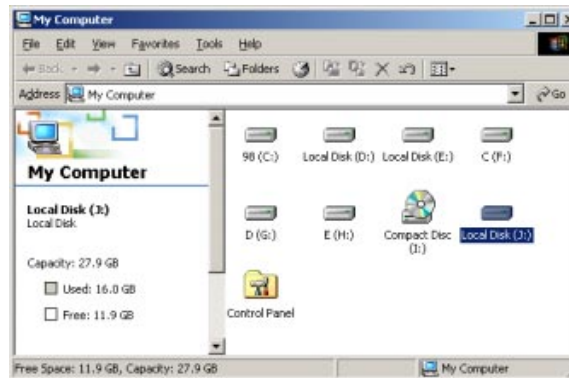
Freecom MediaPlayer Drive-In


GB

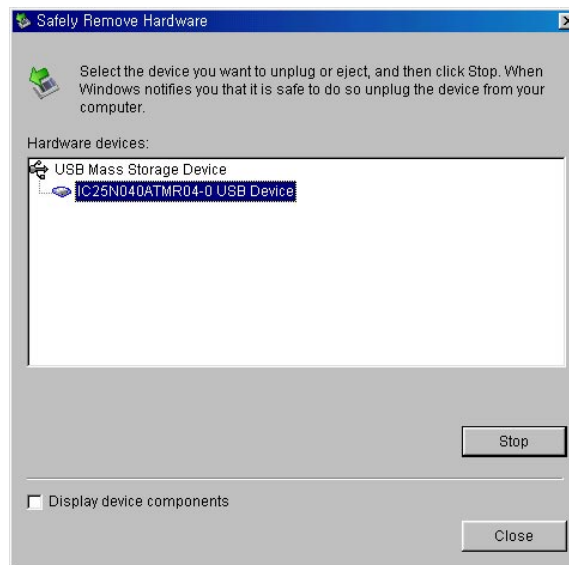
1

2. Check 'My Computer' or 'Explorer', there should be a new volume. You can copy any data to this volume.

If a new volume does not appear, check if the HDD is formatted, and check the HDD file system. Windows 98SE can only detect FAT32 file system.

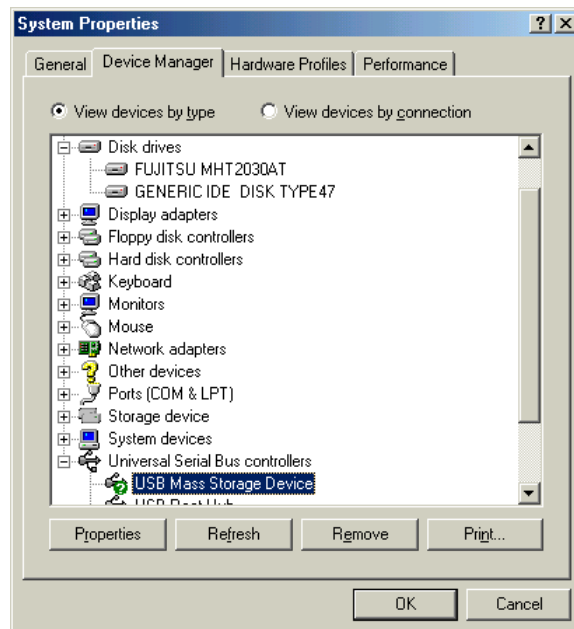


3. After copying data, remove the player using remove icon  from the Windows taskbar. Not following this procedure may cause data loss and damage to the harddrive.

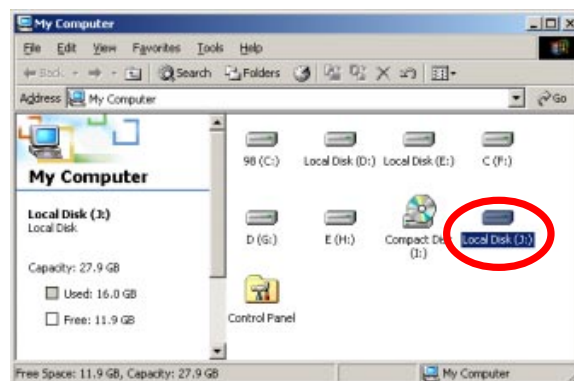


1.4.2 Windows ME


1. After connecting the player and plugging the power cable, Windows will automatically install the driver. After this, please check the driver installation at Windows [Start > Settings > Control Panel > (view all Control Panel options) > System > Device Manager > Universal Serial Bus controllers > USB Mass Storage Device]

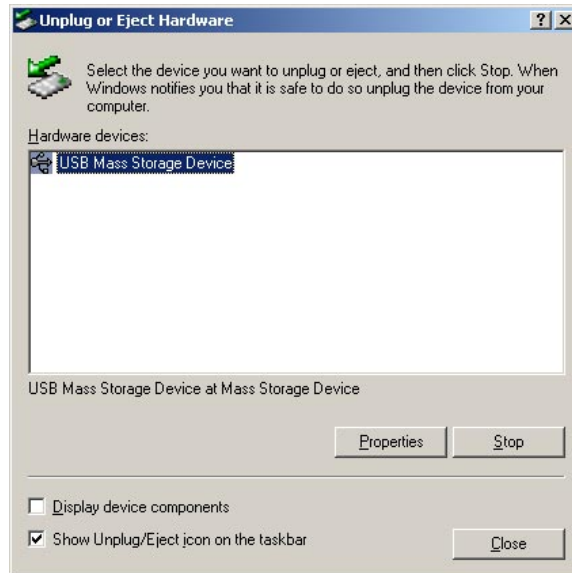


2. Check 'My Computer' or 'Explorer', there should be a new volume. You can copy any data to this volume.



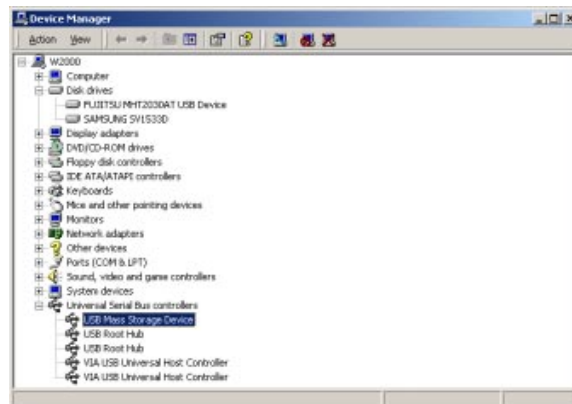
If a new volume does not appear, check if the HDD is formatted or not, and check the HDD file system. Windows Me can only detect FAT32 file system.

3. After copying data, remove the player using the remove icon  from the Windows taskbar. Not following this procedure may cause data loss and damage to the device.

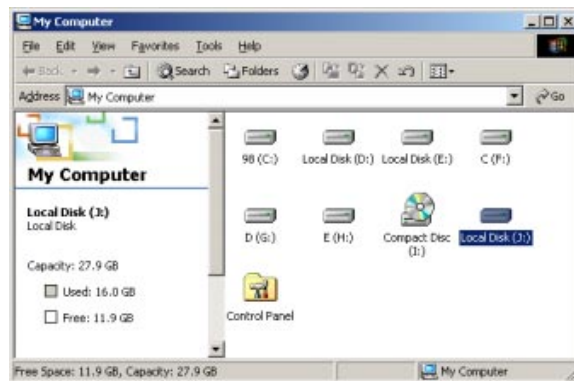


1.4.3 Windows 2000, XP


1. After connecting the player and plug power cable, Windows will automatically install the driver. After this, please check the driver installation at Windows [Start > Settings > Control panel > (switch to classic View on Windows XP) > system > Hardware > Device manager > Universal Serial Bus controllers > USB Mass Storage Device].

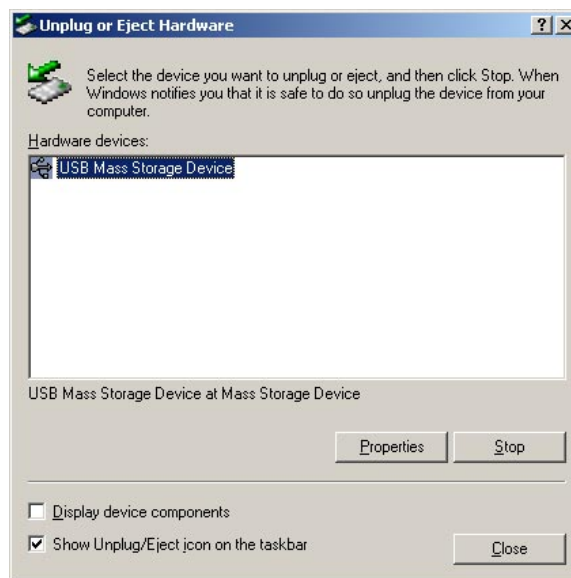


2. Check 'My Computer' or 'Explorer', there should be a new volume. You can copy any data to this volume.



If new volume is not be appeared, check if HDD is formatted. Windows 2000, XP can detect both FAT32 and NTFS file system.

3. After copying data, remove the player using remove icon  from the Windows taskbar. Not following this procedure may cause data-loss or damage to the player.



When you see 'Non High-Speed USB Hub Message':

This message will be displayed in Windows XP when you plug the player into a USB 1.1 spec. Host adapter port.

1.4.4 Linux

[Automatic Mount]

After booting, do log-in.

Connect the Network MediaPlayer-35 drive in kit -> Power On the Network MediaPlayer-35 drive in kit -> Check the detection with [fdisk] -> make Mount Pointer (ex. mediatest) at Folder Mount(/mnt) -> Edit [/etc/fstab] -> add the following:

- /dev/sda /mnt/mediatest vfat noauto, user 0 0 (in case of FAT32 HDD)
- /dev/sda /mnt/mediatest ntfs noauto, user 0 0 (in case of NTFS HDD)

Do Log-in again.

Above example "sda" is assumed that the Network MediaPlayer-35 drive in kit will be detected as "sda" on your system. If not, you have to write the drive name which is detected as "USB Mass Storage", not "sda".

[Manual Mount]

Connect the Network MediaPlayer-35 drive in kit -> Power On the Network MediaPlayer-35 drive in kit -> Check the detection with [fdisk] -> make Mount Pointer (ex. mediatest) at Folder Mount(/mnt) -> Edit [/etc/fstab] -> add the following:

- mount -t vfat /dev/sda /mnt/mediatest (in case of FAT32 HDD)
- mount -t ntfs /dev/sda /mnt/mediatest (in case of FAT32 HDD)

Above example "sda" is assumed that the Network MediaPlayer-35 drive in kit will be detected as "sda" on your system. If not, you have to write the drive name which is detected as "USB Mass Storage", not "sda".

[How to stop using]

Do [unmount] at Device Control.

1.4.5 Mac

There is no need to install a MAC installation driver, the player will be detected automatically. If the player is detected correctly, an icon will appear on your desktop.

When removing the player, drag the icon to the trash-can on your desktop and unplug the device.

Chapter 2: Access PC via Network

GB

1

2.1 Connect LAN Cable

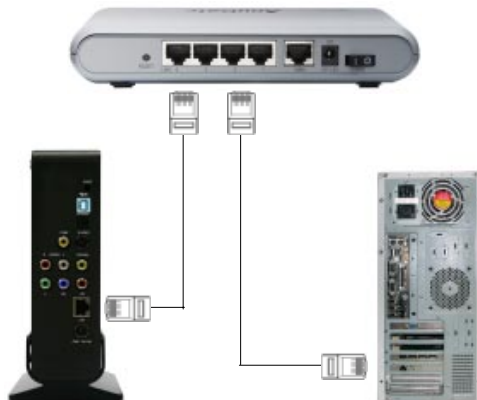
When connecting Computer to the Network MediaPlayer-35 drive in kit directly



Connect LAN cable to LAN port between player and PC. In this case, you have to use a Cross-wired LAN cable.

[TIP] If your computer's LAN card is already used for connection to Internet line, you can install an additional LAN card to your PC and connect that additional LAN card to the player.

When connecting with IP Router or Hub



Connect LAN cable to LAN port between IP Router or Hub. In this case, you have to use a standard LAN Cable.

2.2 Set Network Configurations

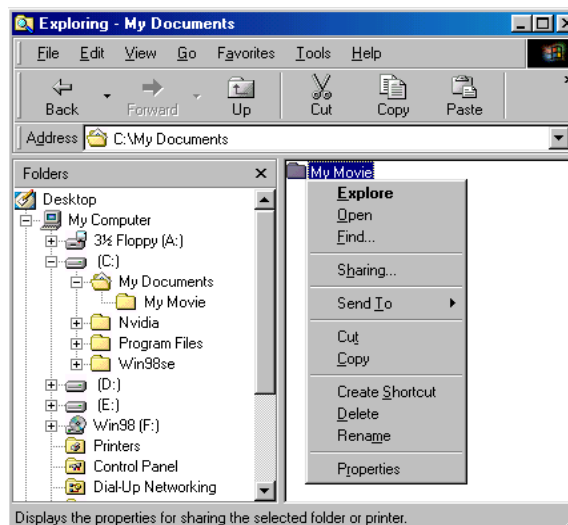
After connecting the LAN cable, you have to set network configurations of Computer and Player. You need to share a folder on Windows computer and use same 'IP Address range' and same 'Subnet Mask ' between Windows computer and Player. For example:

	Computer	Network MediaPlayer-35 drive in kit
IP Address	192.168.1.2	192.168.1.3
Subnet Mask	255.255.255.0	255.255.255.0

It is possible to assign IP address and Subnet Mask of the player as Dynamic or Static.

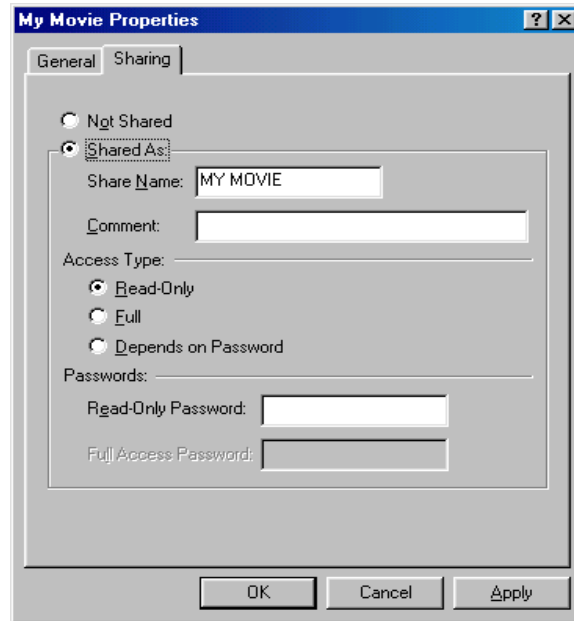
2.2.1 Windows 98SE, ME

1. Select a folder you want to share. Right-click the folder and click 'sharing' in pop-up menu.



2. Check 'Shared as' and write 'Share Name'. For example, "My Movie"

- **"Share Name": maximum length is 12 characters.**
- **We recommend to check 'Read Only' at 'Access Type'**
- **Do not use the password option**

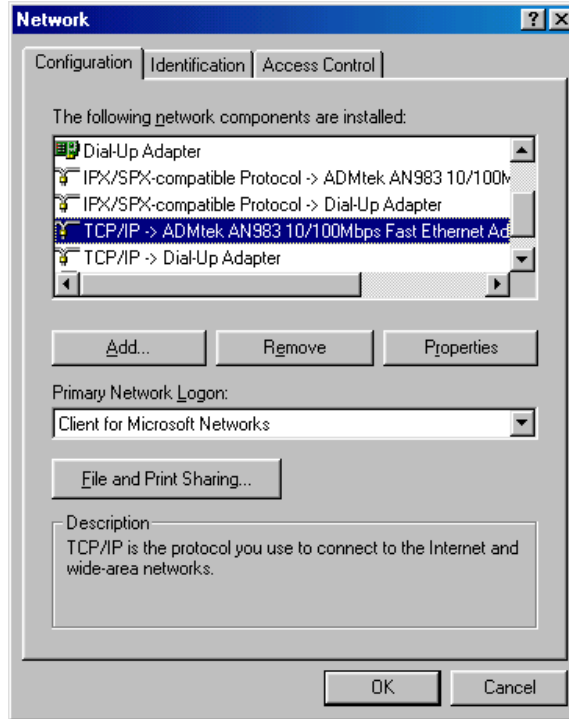


3. After that, the shared folder will be displayed like in following picture.



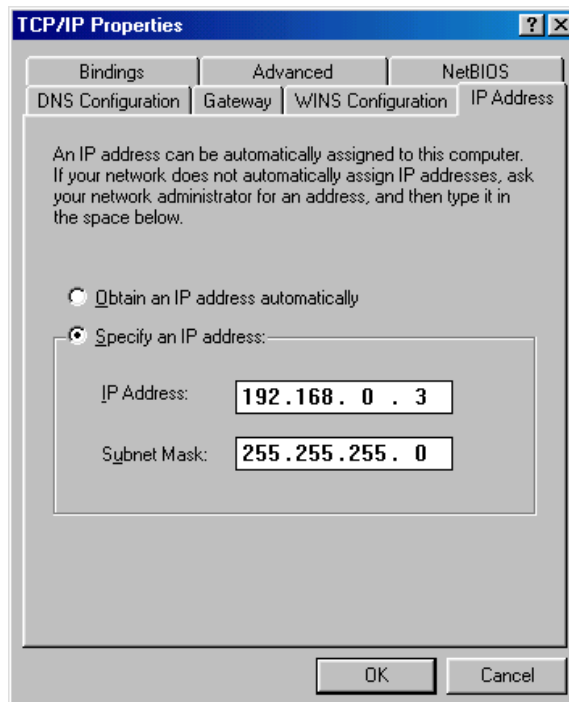
4. Move to [Control panel > Network], and double click '**TCP/IP->LAN card**' that you want to use on your computer.

In order to see LAN Card name, move to [Control Panel>System>Device Manager>Network adaptors].



5. Check 'Specify an IP address', and write 'IP address' & 'Subnet mask' that you want to use. For example:

IP address: 192.168.1.3
Subnet mask: 255.255.255.0



If you have already been 'obtained an IP address automatically' from DHCP Server or IP Router on your local area network, you don't need to enter a specific IP address. Use 'Obtain an IP address automatically' or write IP address & Subnet mask that DHCP Server or IP Router provides.

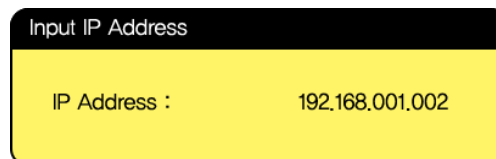
6. Set the network configurations of the player

You have to connect the player to a TV set for this setup. See "3.1.1 Connect Video Cable".

Press [SETUP] of remote control for moving to setup screen.. Select 'DHCP Off' and write IP address & Subnet mask. For example:

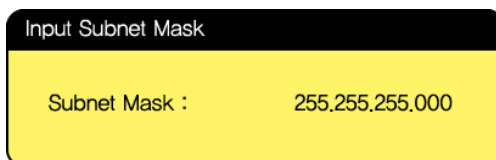
IP Address:	192.168.1.2
Subnet mask:	255.255.255.0

After entering the numbers, press [SETUP] again for saving configurations.



Input IP Address

IP Address : 192.168.001.002

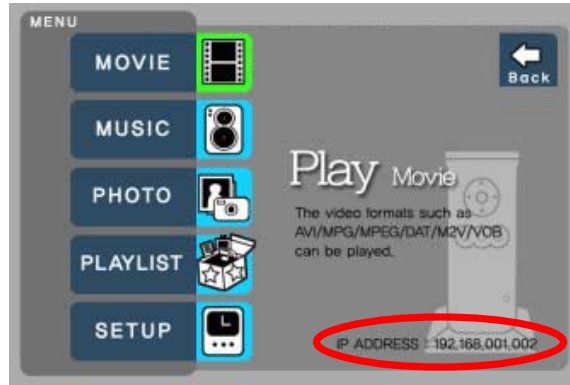


Input Subnet Mask

Subnet Mask : 255.255.255.000

If you have already been provided a dynamic IP address from DHCP Server or IP Router on your local area network, you don't need to enter a static IP address. Use 'DHCP on' or enter the IP address & Subnet mask that DHCP Server or IP Router provides.

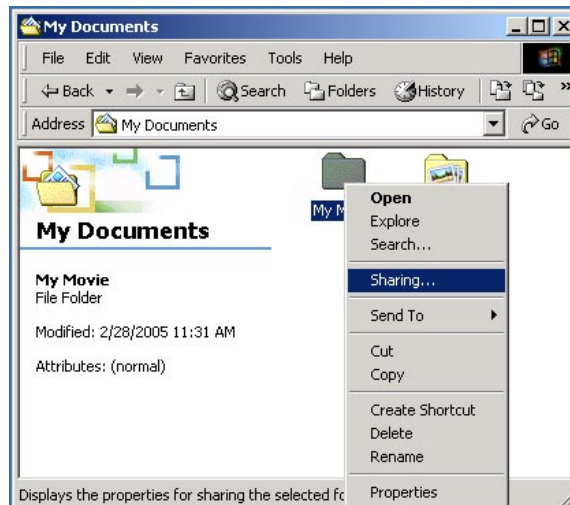
Check 'IP address obtained automatically' When you use 'DHCP On', you can see the IP address in MENU screen after selecting 'PC-Network' icon in Mode Selection screen.



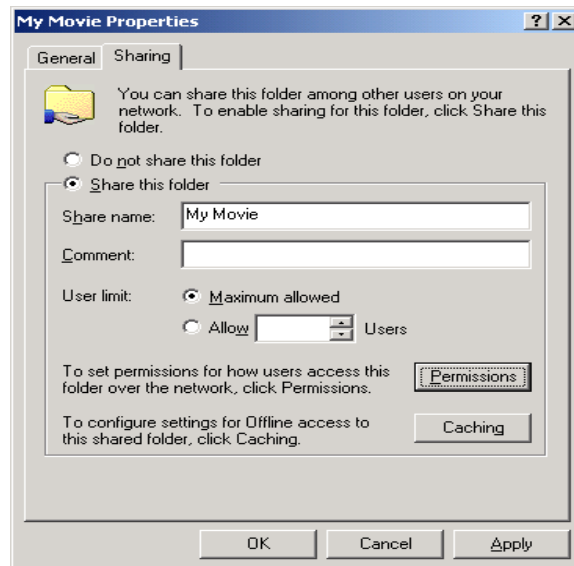
The MediaPlayer IP Address

2.2.2 Windows 2000

1. Select a folder which you want to share. Right-click the folder and click 'Sharing' in pop menu.



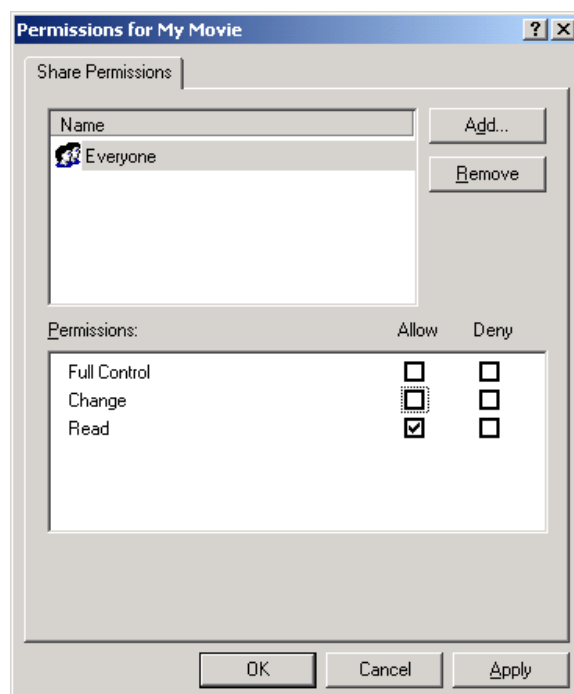
2. Check 'Share this folder' and write 'share name'. For example, "My Movie":



"Share Name": maximum length is 12 characters.

3. Click 'Permissions' and check whether "Everyone" account is present or not. If not, add "Everyone" account.

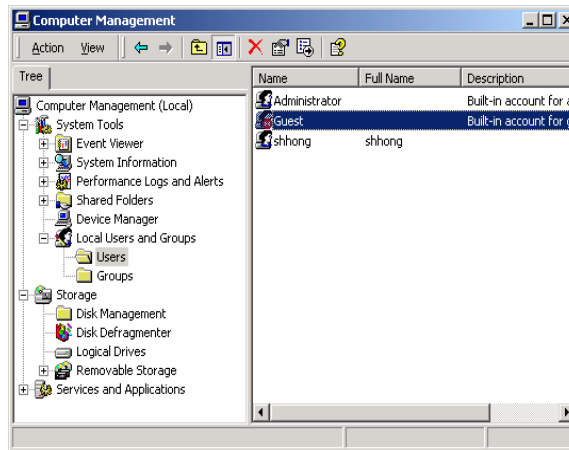
We Recommend only to use 'Read>Allow' at Permissions.



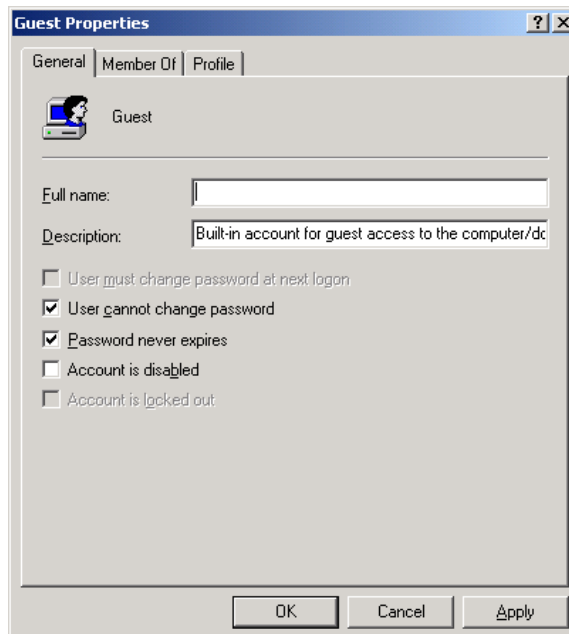
4. After that, the shared folder will be displayed as following picture.



5. Move to [Settings>Control Panel>Administrative Tools>Computer management>Local Users and Groups>Users], and double click 'Guest'.



6. Check 'User cannot change password' and 'Password never expires'.

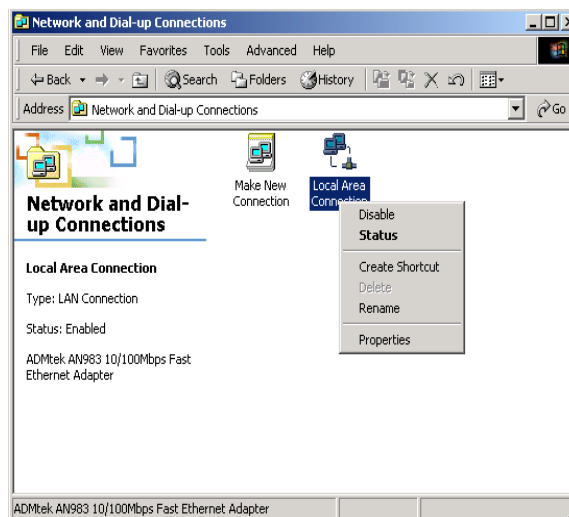


7. Move to [Control Panel>Network and Dial-up Connections], and select Properties 'Local Area Connections' by right click of mouse.

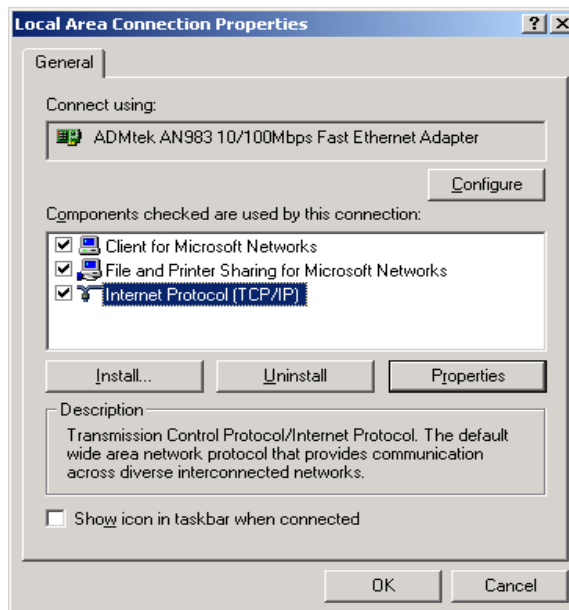
If you see two or more 'Local area connections', select one that you will use for connecting to the player.

GB

2

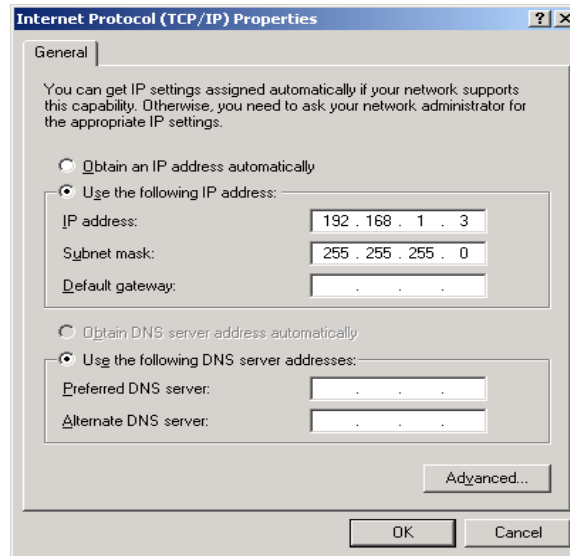


8. Double click 'Internet Protocol (TCP/IP)' that you want to use on your computer.



9. Check 'Use the following IP address', and write 'IP address' & 'Subnet mask' that you want to use. For example:

IP address: 192.168.1.3
Subnet mask: 255.255.255.0



If you have already been provided a dynamic IP address from DHCP Server or IP Router on your local area network, you don't need to enter a static IP address. Use 'Obtain an IP address automatically' or enter the IP address & Subnet mask that DHCP Server or IP Router provides.

10. Set the network configurations of the player.

You have to connect the player to a TV set for this setup. See "3.1.1 Connect Video Cable".

Press [SETUP] on remote control for moving to setup screen. Select 'DHCP off' and write IP address & Subnet mask. For example:

IP Address: 192.168.1.2
Subnet mask: 255.255.255.0

After entering the numbers, press [SETUP] again to save the configuration.

Input IP Address

IP Address : 192.168.001.002

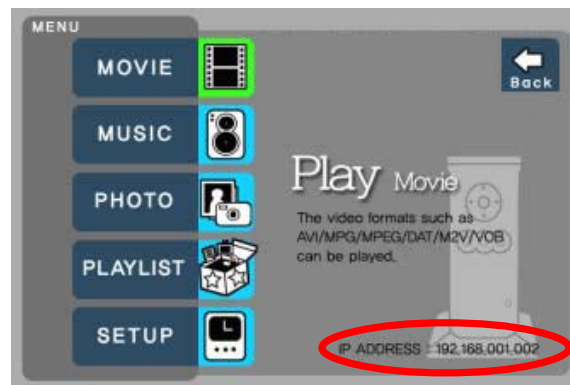
Input Subnet Mask

Subnet Mask : 255.255.255.000

If you have already been provided dynamic IP address from DHCP Server or IP Router on your local area network, you don't need to enter a static IP address. Use 'DHCP on' or write IP address & Subnet mask that DHCP Server or IP Router provides.

Check 'IP address obtained automatically'

When you use 'DHCP On', you can see the IP address in MENU screen after selecting 'PC-Network' icon in Mode Selection screen.



The MediaPlayer IP Address

2.2.3 Windows XP

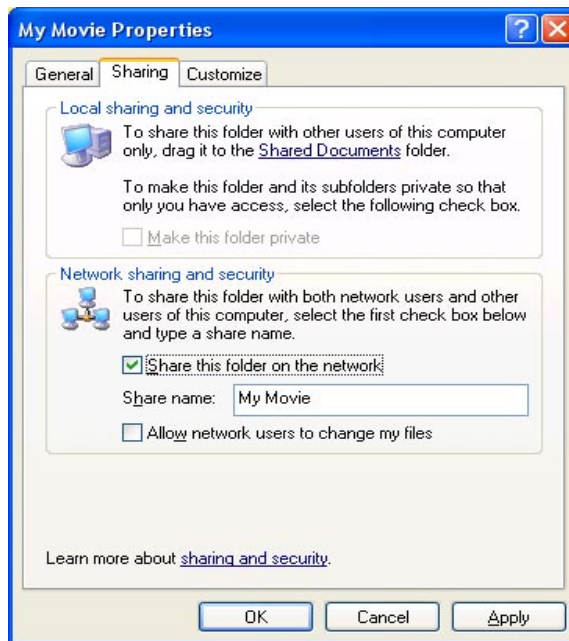
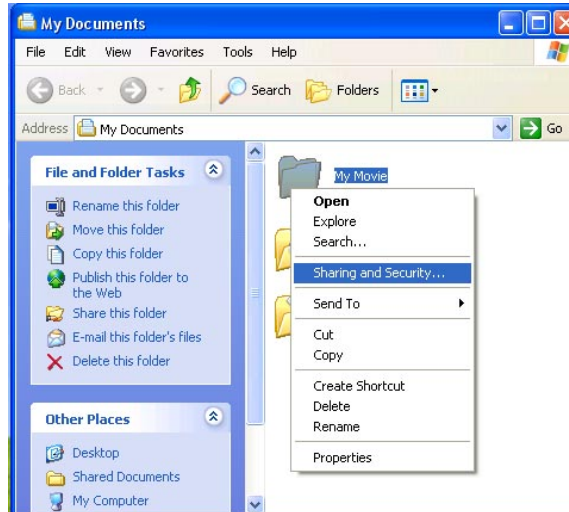
1. Select a folder which you want to share. Right-click the folder and click 'Sharing and Security' in pop menu.
2. Check 'Share this folder on the network' and write 'Share name'. For example, "My Movie".

"Share Name": maximum length is 12 characters.

Freecom MediaPlayer Drive-In

GB

2



3. After that, the shared folder will be displayed as following picture.



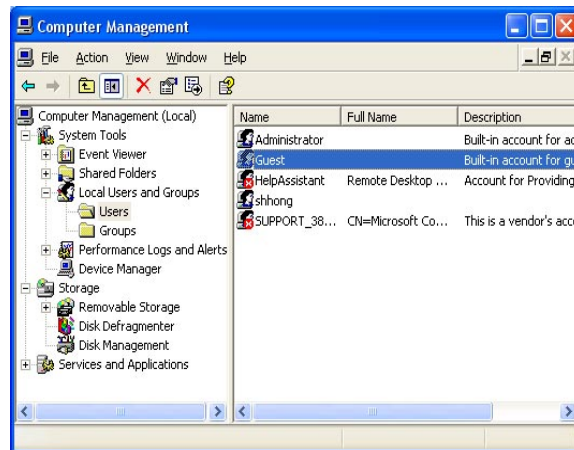
4. Move to [Settings>Control Panel>Administrative Tools>Computer management>Local Users and Groups>Users], and double click 'Guest'.

This is for Windows XP Professional. Windows XP Home users can't see this figure. Go to next number 6).

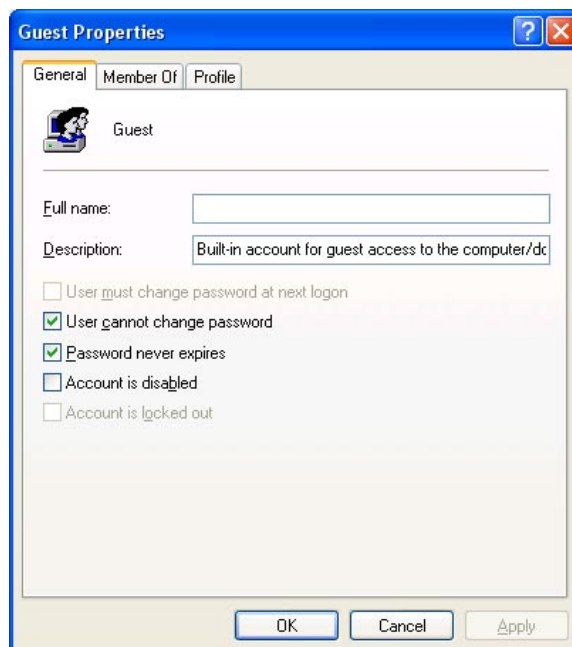
If you can't find 'Administrative Tools' at Control Panel, click "Switch to classic view" in left-up corner on screen.

GB

2



5. Check 'User cannot change password' and 'Password never expires'.



6. Move to [Control Panel>Network connections], and select 'Local area connections' properties by right click of mouse.

Freecom MediaPlayer Drive-In

GB

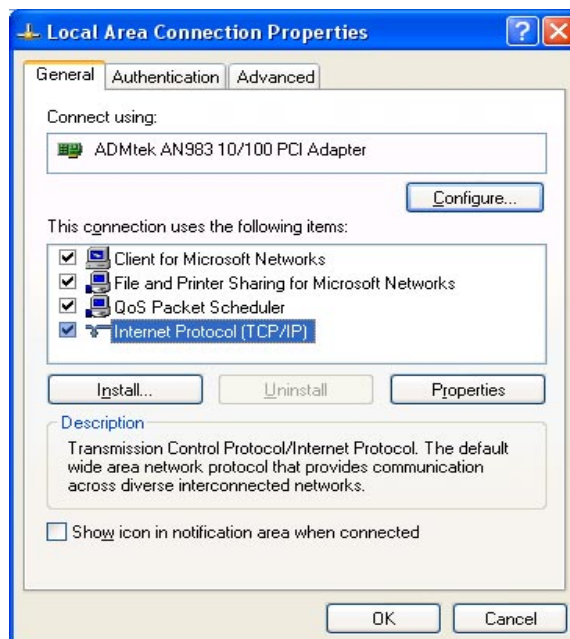
2

If you can't find 'Administrative Tools' at Control Panel, click "Switch to classic view" in left-up corner on screen.

If you see two or more 'Local area connections', select one that you will use for connecting to the player.

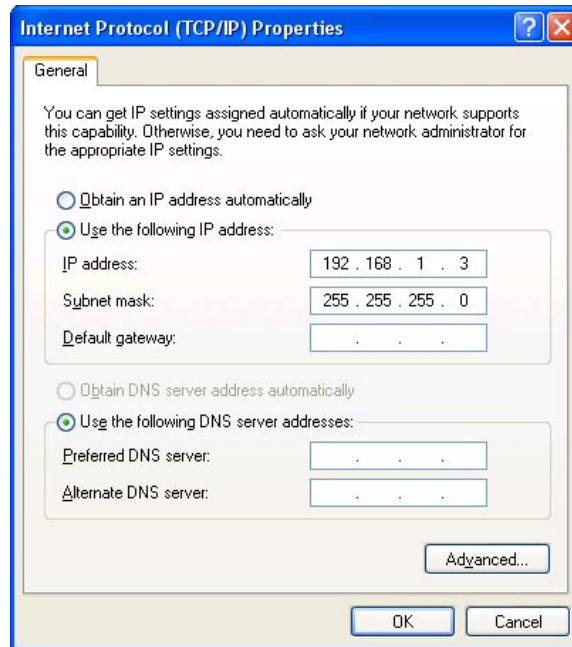


7. Double click 'Internet Protocol(TCP/IP)' that you want to use on your computer.



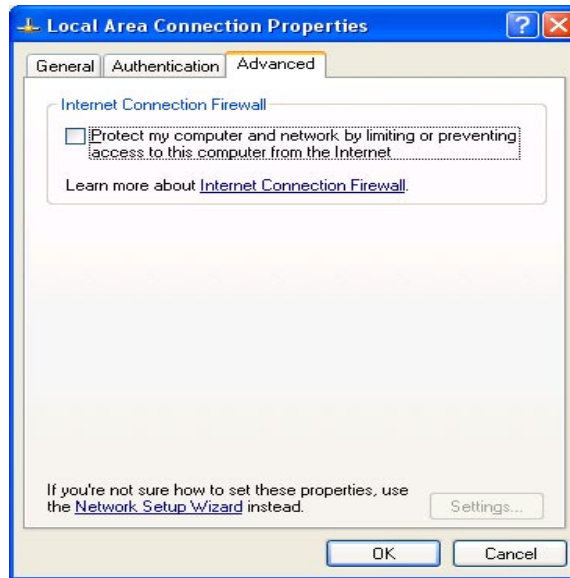
8. Check 'Use the following IP address', and write 'IP address' & 'Subnet mask' that you want to use. For example:

IP address: 192.168.1.3
Subnet mask: 255.255.255.0

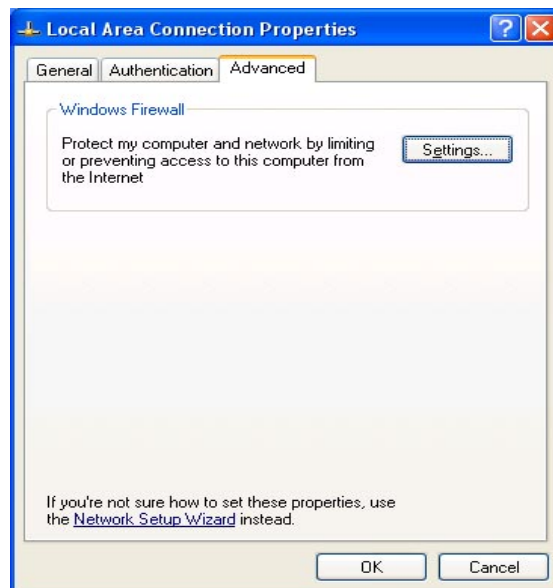


If you have already been provided dynamic IP address from DHCP Server or IP Router on your local area network, you don't need to enter a static IP address. Use 'Obtain an IP address automatically on' or enter the IP address & Subnet mask that DHCP Server or IP Router provides.

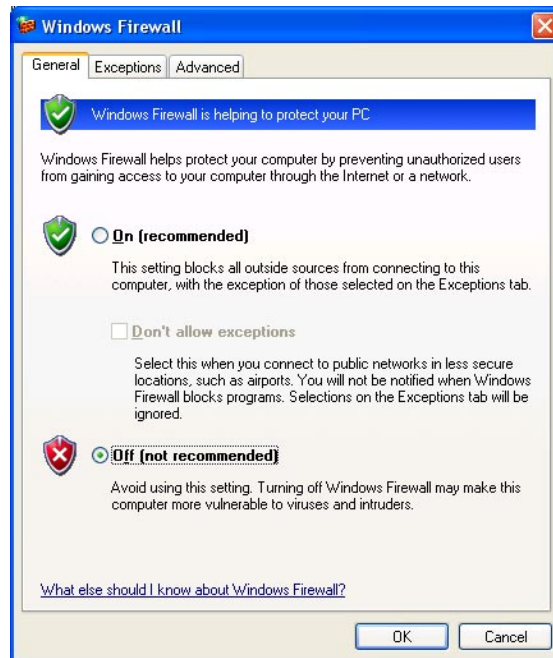
- At above number 7 figure, click 'Advanced' Tab. Disable 'Internet Connection Firewall'.



If you use service pack 2, refer to the following figures. Click 'Settings' at 'Windows Firewall'



Check 'Off' and click 'OK'



GB

2

10. Set the network configurations of the player.

You have to connect the player to a TV set for this setup. See "3.1.1 Connect Video Cable".

Press [SETUP] on the remote control for moving to setup screen. Select 'DHCP off' and write IP address & Subnet mask.

For example:

IP Address:	192.168.1.2
Subnet mask:	255.255.255.0

After entering the numbers, press [SETUP] again to save the configurations.

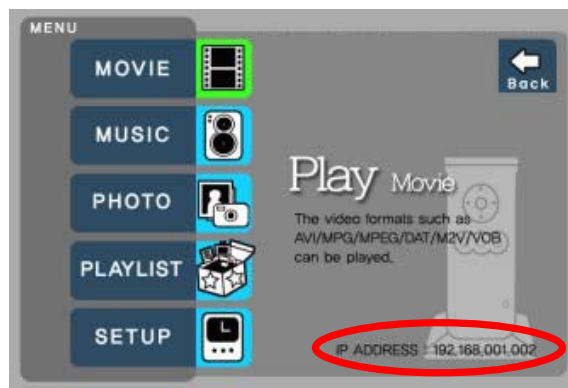
Input IP Address

IP Address : 192.168.001.002

Input Subnet Mask

Subnet Mask : 255.255.255.000

- **If you have already been provided dynamic IP address from DHCP Server or IP Router on your local area network, you don't need to enter a static IP address . Use 'DHCP on' or enter the IP address & Subnet mask that DHCP Server or IP Router provides.**
- **Check 'IP address obtained automatically'**
- **When you use 'DHCP On', you can see the IP address in MENU screen after selecting 'PC-Network' icon in Mode Selection screen.**



MediaPlayer IP Address

Chapter 3: Use as Multimedia Player

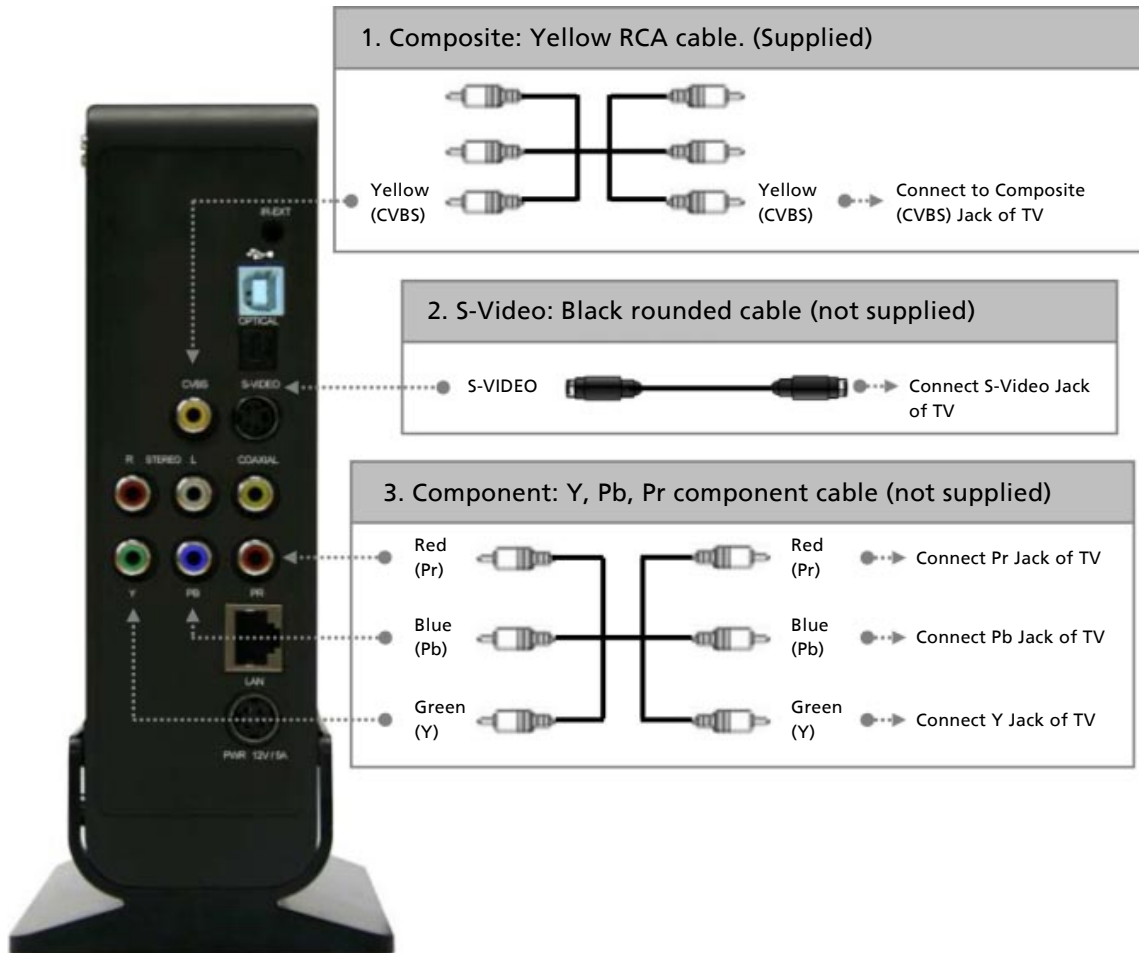
GB

3

3.1 Connect to External AV Device

3.1.1 Connect Video Cable

The player supports 3 types of video output; "Composite, S-video and Component". Use the video connection that your TV supports. Normally, TV supports composite video connection; a composite video cable is supplied with the player.



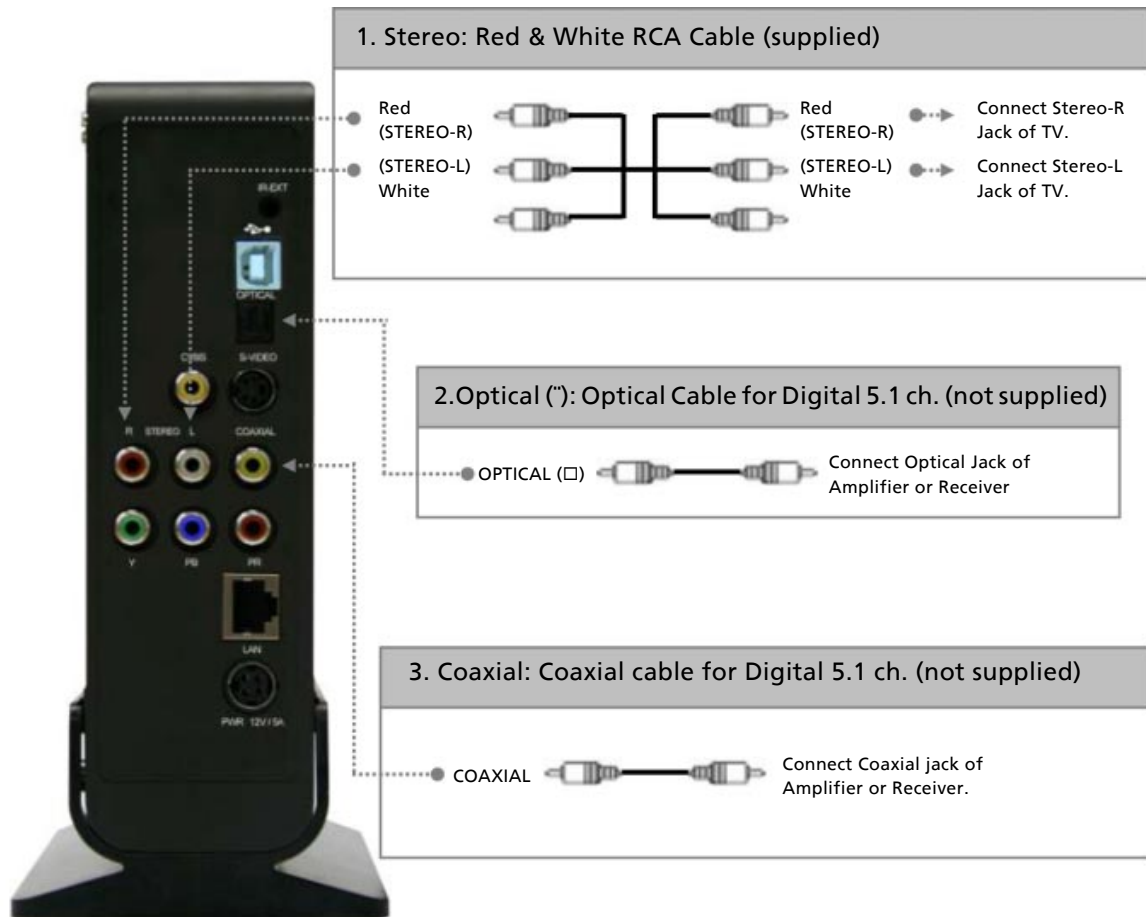
When you do not see a normal screen after connecting the video cable, check the following:

- 1. "TV" – Switch to Video Input Mode: Turn on TV, and switch to video input mode same as video connection. See TV user manual.**
- 2. "player" – Switch to Video Output Mode: Press [VIDEO] button repeatedly. Whenever press [VIDEO], video output signal is changed.**

3. After you see normal screen, you have to save video configuration of the player. See "3.2.1 Video Setup".

3.1.2 Connect Audio Cable

The player supports 3 type of audio output; "Stereo, Coaxial and Optical". Use audio connection that your TV or Audio set supports. Normally, TV supports standard stereo audio connection, the cable for this is supplied with the player.



Don't connect optical and coaxial cable together at the same time!

When you do not hear sound after connecting Optical or Coaxial Cable, you have to change audio setup of the player as Encoded Digital. See "3.2.2 Audio Setup"

3.2 Basic Setup

3.2.1 Video Setup

This chapter shows you how to setup the video output of the player. You have to setup the player's video output mode to correspond to the video input mode of your TV.

When you do not see a normal screen after connecting video cable, check the following:

- 1. "TV "– Switch to Video Input Mode: Turn on TV, and switch to video input mode same as video connection. See TV user manual.**
- 2. "Player" – Switch to Video Output Mode: Press [VIDEO] button repeatedly. Whenever [VIDEO] is pressed, the video output signal is changed.**
- 3. After you see normal screen, you have to save video configurations of the player.**

TTV Video Input Mode	Player Video Output Mode	Connection Jack of TV, Player	Video Cable Type
Normal Video	TV Out: NTSC C/S-Video (HD Component OFF)	CVBS or Composite Jack (Generally Yellow Jack)	Yellow RCA Cable (Supplied)
	TV Out: PAL C/S-Video (HD Component OFF)		
S-Video	TV Out: NTSC C/S-Video (HD Component OFF)	S-Video Jack	S-Video Cable * Black rounded
	TV Out: PAL C/S-Video (HD Component OFF)		
Component 480i	TV Out: NTSC C/YPbPr (HD Component OFF)	Component 3 Jack * Y(Green), Pb(Blue), Pr(Red)	Component Cable * Y(Green), Pb(Blue), Pr(Red)
	TV Out: PAL C/YPbPr (HD Component OFF)		
Component 480p	HD Component Out On 480p		
Component 720p	HD Component Out On 720p		
Component 1080i	HD Component Out On 1080i		

NTSC, PAL : Standard of TV Output. Select the corret one for use in your country.

Setup Procedure

1. Turn on the player and press [SETUP] on Mode Selection screen.



2. Move to 'TV Out' icon and press [ENTER]. Setup box will be displayed under icon menu.

3. Move to Video Output Mode that you want and press [ENTER].

4. Press [SETUP] again to save the configurations.



3.2.2 Audio Setup

This chapter shows you how to set up the audio output of the player. You can use Stereo or Digital 5.1 ch.

Analogue/DCPM: Select when you connect the supplied audio cables (Red / White) to TV or Audio set directly.

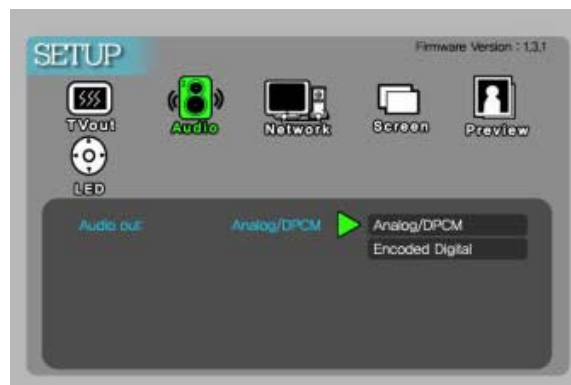
Encoded Digital: Select when you want to listen through 5.1Ch / DTS Dolby by connecting receiver (or amplifier) with Optical or Coaxial cable.

Setup Procedure

1. Turn on the player and press [SETUP] in Mode Selection screen.



2. Move to 'Audio' icon and press [ENTER]. Setup box will be displayed under icon menu.
3. Move to Audio Output Mode that you want and press [ENTER].
4. Press [SETUP] again to save the configurations.



3.2.3 Network Setup

You can obtain an IP address automatically from DHCP Server or IP Router, or set the specific IP address. Check your network environments.

DHCP On: You can use this option when it is possible to obtain IP address automatically from DHCP Server or IP Router.

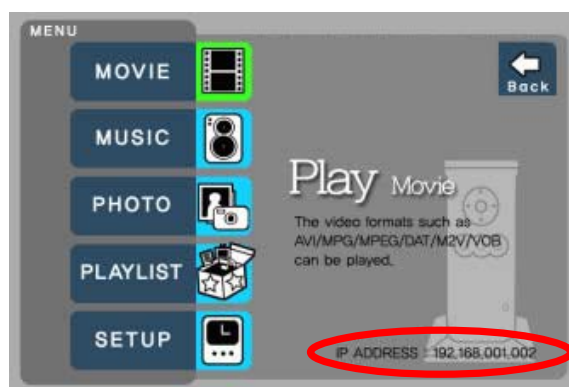
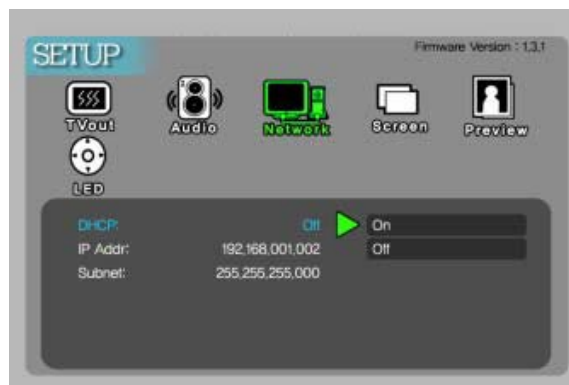
DHCP Off: When it is not possible to obtain IP address automatically or you connect to your PC directly without DHCP Server or IP Router, you have to use this option. Just enter the IP address and Subnet mask.

DHCP On Setup Procedure

1. Turn on the player and press [SETUP] in Mode Selection screen.



2. Move to 'Network' icon and press [ENTER]. Setup box will be displayed under icon menu.
3. Move to DHCP On and press [ENTER].
4. Press [SETUP] again for saving configurations.



Check 'IP address obtained automatically'

When you use 'DHCP On', you can see the IP address in MENU screen after selecting 'PC-Network icon in Mode Selection screen.

DHCP Off Setup Procedure

1. Turn on the player and press [SETUP] in Mode Selection screen.



2. Move to 'Network' icon and press [ENTER]. Setup box will be displayed under icon menu.
3. Move to DHCP Off and press [ENTER].



4. Move to 'IP Addr' and press [ENTER]
IP address Input box will be displayed. Enter IP address using arrow and number buttons of remote control. After this, press [ENTER] again.

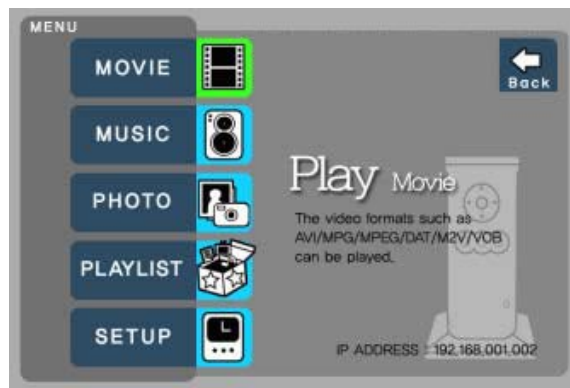
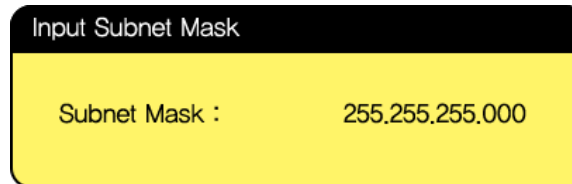


Freecom MediaPlayer Drive-In

GB

3

5. Move to 'Subnet' and press [ENTER].
Subnet mask Input box will be displayed. Enter Subnet mask using arrow and number buttons of remote control. After this, press [ENTER] again.
6. Press [SETUP] again to save configurations.



Check 'The specific IP address you wrote'

When you use 'DHCP off', you can see the IP address in MENU screen after selecting 'PC-Network' icon in Mode Selection screen.

3.2.4 Screen Setup

This chapter shows you how to set the TV Type. You can select 4:3 Letter Box, 4:3 Pan Scan, and 16:9.

Setup Procedure

1. Turn on the player and press [SETUP] in Mode Selection Screen.



2. Move to 'Screen' icon and press [ENTER]. Setup box will be displayed under icon menu.
3. Move to 4:3 Letter box, 4:3 Pan scan or 16:9 that you want and press [ENTER].
4. Press [SETUP] again to save configurations.



3.2.5 Preview Setup

You can enable or disable preview the photo file as a thumbnail image before playing.

Setup Procedure

1. Turn on the player and press [SETUP] in Mode Selection screen.



2. Move to 'LED' icon and press [ENTER]. Setup box will be displayed under icon menu.
3. Move to LED on or off; select the setting you want and press [ENTER].
4. Press [SETUP] again to save the configurations.



3.2.6 LED Setup

You can turn on or off the backlight LED of the arrow buttons on the front side of the player. For instance, should the LED disturb you at night, you can turn off the LED.

Setup Procedure

1. Turn on the player and press [SETUP] in Mode Selection screen.



2. Move to 'LED' icon and press [ENTER]. Setup box will be displayed under icon menu.
3. Move to LED on or off; select the setting you want and press [ENTER].
4. Press [SETUP] again to save the configurations.



3.3 Basic Screen Menu

3.3.1 Mode Selection, Media Type Selection

After turning on the player, you will see the Mode Selection screen. In this screen, you can select Built-in HDD or Networking Computers. Just press [ENTER] after moving to the desired icon with the arrow buttons.

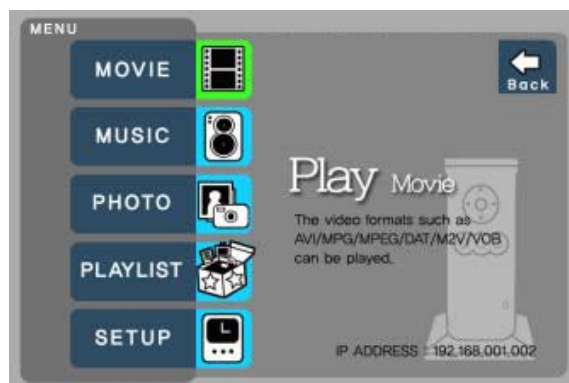
If there is no HDD or networking PC, these icons are not activated.

Use Built-in HDD

1. [Mode Selection] Move to 'MediaPlayer-35' icon and press [ENTER] for playing files from the built-in HDD.

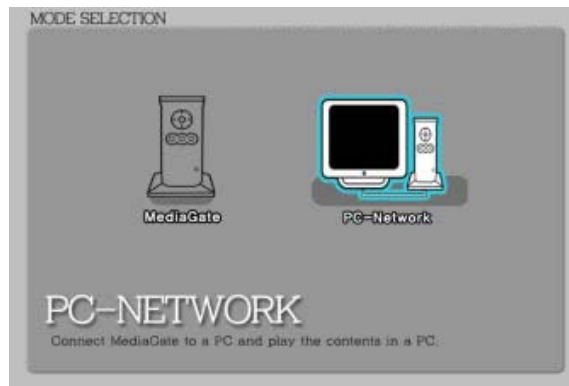


2. [Media Type Selection] Select a media type which you want to play and press [ENTER].
 - Video: Select for playing Video files
 - Music: Select for playing Music files
 - Photo: Select for playing Photo files
 - List: Select for making a playlist including video, music, photo files
 - Setup: Select for moving to setup screen.



Use Networking Computer

1. [Mode Selection] Move to 'PC-Network' icon and press [ENTER] for playing files from computer(s) within your network.



2. [Media Type Selection] Select a media type which you want to play and press [ENTER].
 - Video: Select for playing Video files
 - Music: Select for playing Music files
 - Photo: Select for playing Photo files
 - List: Select for making a play list including video, music, photo files
 - Setup: Select for moving to setup screen.

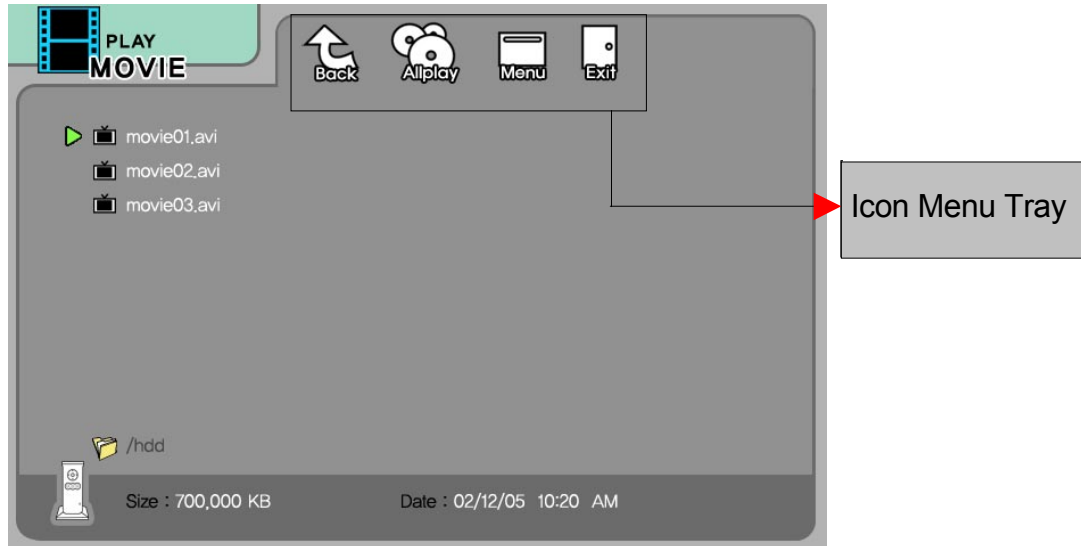


3. [Computer list on network] Computer list on network will be displayed. Move to a computer and press [ENTER].



3.3.2 File Selection

After selecting a Media type, 'File Selection' screen will be displayed. Move to the file that you want to play and press [ENTER] or [PLAY/PAUSE].



- **[ENTER] button:** Play one file that you select. After finishing playback, return to 'file selection screen'.
- **[PLAY/PAUSE] button:** After playing the file that you select, the next files are automatically played.
- **▲▼ button:** Move to files by pressing ▲▼ arrow buttons.
- **◀ button:** Return to previous directory by pressing ◀ arrow button.
- **▶ button:** Go to 'Icon Menu Tray', located at the top of the screen, by pressing ▶ button. In order to return to file selection screen, press ▼ arrow button or select Exit icon.

Icon Menu Tray Descriptions

Go to 'Icon Menu Tray', located at the top of the screen with pressing ▶ button. In order to return to file selection, press ▼ arrow button or select 'Exit' icon.



Back: Return to previous directory



Allplay: After playing the file that you select, play all files automatically. This is the same function as [PLAY/PAUSE] button.



Menu: Return to Media Type screen.

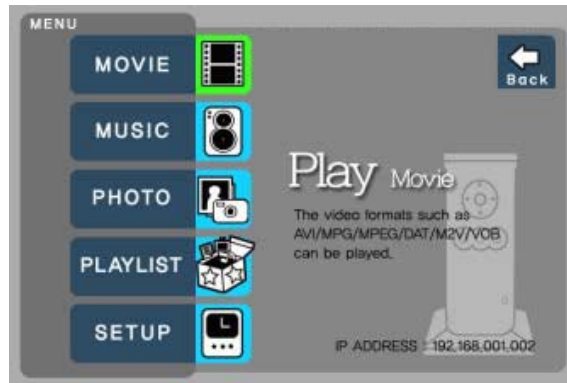


Exit: Exit Icon Menu Tray and return to file selection screen.

3.4 Play Video Files

You can play video files like AVI, MPG, MPEG, DAT, M2V, and VOB. Select 'Movie' icon in Media Type Selection screen. Video file list will be displayed. Move to a file and press [ENTER] or [PLAY/PAUSE] button.

Select 'Movie' icon in Media Type Selection screen.



Move to a file and press [ENTER] or [PLAY/PAUSE] button.



Function and Button Descriptions

Remote Control	Function	Descriptions
AUDIO	Dual Audio	It is possible to switch each audio language when the audio format is dual-audio, for example, including a local language and English.
SUBTITLE	Subtitle Move& Size	It is possible to change subtitle size and location. ◀▶ arrow button changes size and ▲▼ arrow button changes location. After selecting, press [ENTER].
	Subtitle Select or Hide	The subtitle name, same as video file, is displayed on screen automatically. However, it is possible to open or hide the other available subtitle files.
	Subtitle Language Select	It is possible to switch each subtitle language when the subtitle is dual language format, for example, including a local language and English. * When selecting 'Discriminating subtitle language', first subtitle language will be displayed.

	Subtitle Sync.	It is possible to set the subtitle sync. with ▲▼ (one second) ◀▶ (60 second) when motion and subtitle sync do not match.
4, 5, 6 Number Button	Subtitle Color Change	Subtitle color is changed when pressing number 4, 6 button. In order to return default color (white), press number 5.
Scr. SIZE	Zoom Vertical	Zoom screen vertically.
	Zoom Full	Enlarge the overall screen.
	Custom	Enlarge or reduce the screen by pressing ▲▼ ◀▶ arrow buttons.
	Default	Return to original screen size and position.
	Screen Position	Move the screen to the direction with ▲▼ ◀▶ arrow buttons. Press [Brt.Cont] key for returning to the original screen position when applying Screen position.
TIME SEARCH	Jump to Preferable Playback Time	Move to a selected time of a file.
CANCEL	Delete Input Numbers	In time search box, this button deletes all numbers to 0.
Brt. CONT	Control luminosity, color depth, brightness	When pressing this button, you can switch to 3 modes. After selecting a mode, change settings with ▲▼ arrow buttons.
FILE INFO	Show File Information	Show the file information which is being played. To hide this information, press this button again.
FF ▶▶ ▶ arrow button	Fast Forward	When this button is pressed, play speed is changed to 8x, 16x, 32x (forward).
REW ◀◀ ◀ arrow button	Rewind	When this button is pressed, play speed is changed to 8x, 16x, 32x (backward).
VOLUME + ▲ arrow button	Volume Up	Volume up.
VOLUME - ▼ arrow button	Volume Down	Volume down.
MUTE	Sound Off	Mute the sound. To hear sound, press this button again.
ENTER	Playback a File	Play a file. After finishing playback, return to file selections screen.
PLAY / PAUSE ▶II	Playback Next All Files	After the file that you select, play the next files automatically. This function is the same as [PLAY/PAUSE] button.
PLAY / PAUSE ▶II	Pause	Pause playback, if pressing this button when a file is being played. To play again, press this button again.
PREV I◀◀	Playback Previous File	Play a previous file before a current playback file. If you used [ENTER] for playback, you can not use this function. This function is available when playing all files using [PLAY/PAUSE] button or 'ALLPLAY' icon.
NEXT ▶▶I	Playback Next File	Play a next file after a current playback file. If you used [ENTER] for playback, you can not use this function. This function is available when playing all files using [PLAY/PAUSE] button or 'ALLPLAY' icon.

0 Number button	Screen Reset	If a frame of a video file is broken, green color will be shown on the overall screen. Press number [0 "Zero"] for screen reset.
MENU	Menu Icon Popup	Popup menu will be appear including 'File Info, Time Search, Subtitle, Scr.Size' functions. To hide the popup, press this button again.

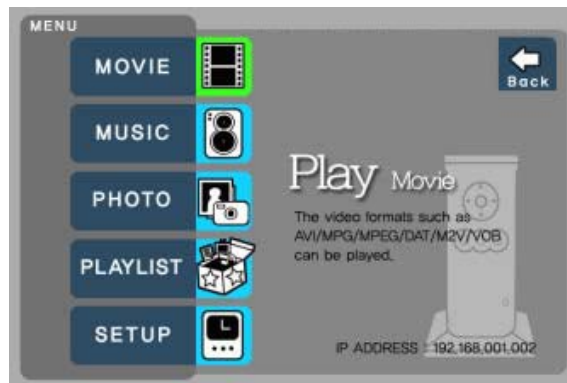
3.5 Play DVD Files

The DVD manager function supports playing ripped DVD Files in same way as an original DVD. Make a separate folder for each ripped DVD, then save all ripped files into the folder. After connecting TV, select VIDEO_TS.IFO file in the folder. Make sure that all the ripped files include the VIDEO_TS.IFO file.

If you can not find VIDEO_TS.IFO file among all the ripped files from an original DVD title, the DVD manager function will not work.

When you play DVD file in networking computer, playback time might be delayed, so it's not possible in all cases to play DVD files on networks. We recommend to use this feature in combination with a built-in HDD, and play your ripped DVD files from this built-in HDD.

Select 'Movie' icon in Media Type Selection screen.



Move to the folder including DVD ripped files, select 'video_ts.ifo' file and press [ENTER] button.



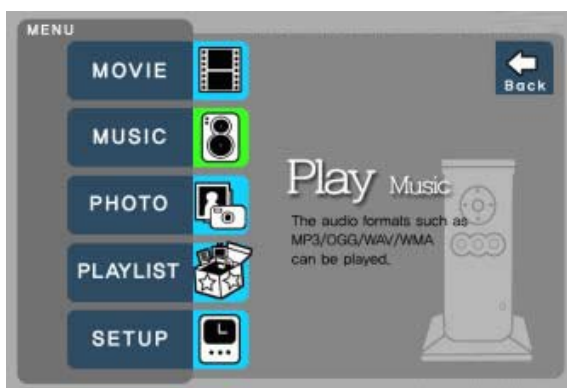
Function and Button Descriptions

Remote Control	Function	Descriptions
AUDIO	Select Audio Type	Audio type will be changed when this button is pressed.
SUBTITLE	Select Subtitle Type	Subtitle type will be changed when this button is pressed.
Scr. SIZE	Screen Size	Screen size will be changed when this button is pressed.
MENU	Go to Menu	Move to main menu while playing DVD.
SLOW	Playback Slow	Play slowly 1/2x, 1/4x, and 1/8x whenever this button is pressed.
REPEAT	Chapter, Title Repeat	Set chapter, title repeat.
A-B REPEAT	A-B repeat	Set A-B repeat.
TITLE	Go to Title Menu	Move to title menu while playing DVD.
ANGLE	Angle	Apply angle function.
FILE INFO	Show File Information	Show the file information of the file currently being played. To hide the information, press this button again.
TIME SEARCH	Jump to Preferable Playback Time	Move to a selected time of a file.
CANCEL	Delete Input Numbers	In time search box, this button deletes all numbers to 0.
Brt. CONT	Control luminosity, color depth, brightness	When this button is pressed, you can switch to 3 modes After selecting a mode, change settings with ▲▼ arrow buttons.
PREV I◀◀	Playback Previous Chapter	Play a previous chapter.
NEXT ▶▶I	Playback Next Chapter	Play a next chapter.
FF ▶▶	Fast Forward	When this button is pressed, play speed is changed to 8x, 16x, 32x, 48x (forward).
REW ◀◀	Rewind	When this button is pressed, play speed is changed to 8x, 16x, 32x, 48x (backwards).
ENTER	Playback	Play 'Video_ts.ifo' file.
PLAY / PAUSE ▶II	Pause	Pause playback, when pressing this button when a file is being played. To resume playback, press this button again.
VOLUME +	Volume Up	Volume up.
VOLUME -	Volume Down	Volume down.
MUTE	Sound Off	Mute the sound. To hear sound, press this button again.

3.6 Play Music Files

You can play music files like MP3, OGG, WAV, WMA. Select Music icon in Media Type Selection screen. The Music file list will be displayed. Just move to a file and press [ENTER] or [PLAY/PAUSE] button.

Select Music icon in Media Type Selection screen.



Move to a file and press [ENTER] or [PLAY/PAUSE] button.



Function and Button Descriptions

Remote Control	Function	Descriptions
FILE INFO	Show File Information	Show the file information of the file that is currently being played. To hide the information, press this button again.
TIME SEARCH	Jump to Preferable Playback Time	Move to a selected time of a file.
CANCEL	Delete Input Numbers	In time search box, this button deletes all numbers to 0.
Brt. CONT	Control luminosity, color depth, brightness	When pressing this button, you can switch to 3 modes. After selecting a mode, change settings with ▲▼ arrow buttons.

PREV I◀◀	Playback Previous File	Play a previous file before a current playback file. If you used [ENTER] for playback, you can not use this function. This is available only when playing all files as using [PLAY/PAUSE] button or 'ALLPLAY' icon.
NEXT ▶▶I	Playback Next File	Play a next file after a current playback file. If you used [ENTER] for playback, you can not use this function. This is available only when playing all files as using [PLAY/PAUSE] button or 'ALLPLAY' icon.
FF ▶▶	Go to 10 Sec. in Forward	Go to 10 sec. forward and play when a file is being played.
REW ◀◀	Go to 10 Sec. in Backward	Go to 10 sec. backward and play when a file is being played.
ENTER	Playback a File	Play a file. After finishing playback, return to file selections screen.
PLAY / PAUSE ▶II	Playback Next All Files	After the file that you select, play next I files automatically. Function is the same as [PLAY/PAUSE] button.
PLAY / PAUSE ▶II	Pause	Pause playback, when pressing this button during file playback. To resume playback, press this button again.
VOLUME +	Volume Up	Volume up.
VOLUME -	Volume Down	Volume down.
MUTE	Sound Off	Mute the sound. In order to hear sound, press this button again.
SUBTITLE	Hide MP3 Sub- title	You can show the MP3 subtitle (when the MP3 file supports this feature). In that case, this button will hide the subtitle. MP3 subtitle supported file must be made by iriver caption editor program. It does not support LDB program.

How to Play MP3 without TV set. MP3 Quick Play

Make a 'music' folder (in a small letter not a capital letter) at root directory of built-in HDD and save MP3 files at the folder. If the HDD is divided into two or more partitions, make a 'music' folder at first partition.

Turn on the player and just press [PLAY/PAUSE] button. MP3 files at 'music' folder will be played automatically. Additionally, after rebooting the player, the last played file will be continue to play.

How to See MP3 Subtitle

It is possible to show MP3 subtitle (when the MP3 file supports this feature). MP3 subtitle supported file must be made by 'iriver caption editor' program, it does not support the LDB program.

3.7 Play Photo Files

You can play photo files like JPG(JPEG). Select the Photo icon in Media Type Selection screen. Photo file list will be displayed. Just move to a file and press [ENTER] or [PLAY/PAUSE] button.

Select the Photo icon in Media Type Selection screen.



Move to a file and press [ENTER] or [PLAY/PAUSE] button.



Function and Button Descriptions

Remote Control	Function	Descriptions
FILE INFO	Show File Information	Show the file information of the file that is being played. To hide the information, press this button again.
PREV I◀◀	Playback Previous File	Play a previous file before the current playback file. If you used [ENTER] for playback, you can not use this function. This is available only when playing all files as using [PLAY/PAUSE] button or 'ALLPLAY' icon.
NEXT ▶▶I	Playback Next File	Play a next file after the current playback file. If you used [ENTER] for playback, you can not use this function. This is available only when playing all files as using [PLAY/PAUSE] button or 'ALLPLAY' icon.
ENTER	Playback a File	Play a file. After finishing playback, return to file selections screen.

PLAY / PAUSE ▶	Playback Next All Files	After the file that you select, play all next files automatically. It is the same function as [PLAY/PAUSE] button.
PLAY / PAUSE ▶	Pause	Pause playback, when this button is pressed during file playback To play again, press this button again.
FF ▶▶	Zoom In	Enlarge a photo.
REW ◀◀	Zoom Out	Reduce a photo.
ANGLE	Rotation	Rotate a photo.
▲▼◀▶	Panning	Move the position of photo.
ENTER	Return to Original Photo	Return to original photo.
Brt. CONT	Control luminosity, color depth, brightness	When pressing this button, you can switch to 3 modes. After selecting a mode, change settings with ▲▼ arrow buttons.

Photo Slide Show

If you play all files with 'PLAYALL' icon or [PLAY/PAUSE], photo slide show will be started.

Music Slide Show

Make a 'music' folder (in a small letter not a capital letter at root directory) of built-in HDD and save MP3 files in this folder. If the HDD is divided into two or more partitions, make a 'music' folder in the first partition.

When you play one or all photo files, you can listen to MP3 and see photo slide show together.

However, if there is just networking computer (not built-in HDD), you cannot listen MP3. In this function the player only detects MP3 files of the built-in HDD's music folder.

Photo Preview On, Off

It is possible to enable or disable preview of the photo file as a thumbnail image before playing, in the SETUP screen.

3.8 Make a Play-List

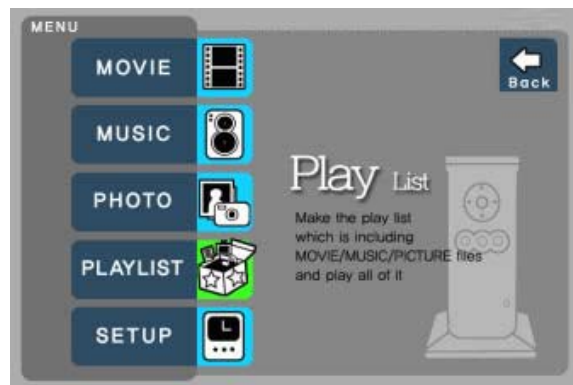
You can create a playlist of all media files like video, music, and photo.

It is not possible to play every registered file independently. Use 'Random, PLAY all' icon or [PLAY/PAUSE] button. Also, the registered play-list will be deleted after rebooting.

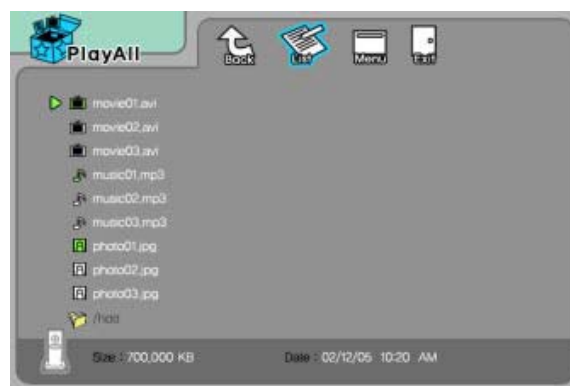
GB

3

1. Select Play List icon in Media Type Selection screen.



2. Move to a file and press [ENTER] for adding to Play-List. After adding, press [▶] for moving to 'Menu Icon tray'. Move to 'List' icon and press [ENTER].



3. Play-List screen appears. You can see just added files. Play as follows:
 - Random icon: play random.
 - Allplay icon: play in order of selected file.
 - Play/Pause button: play in order of selected file.



- In order to move up to Menu Icon Tray, press [▶] button.
- By selecting the delete (X) icon will all the added files.
- In order to delete an added file, move to the file on Play-List screen and press [ENTER] twice.
- In order to change location among added files, move to the file you want to move, press [ENTER] , move to the file where you want to add it below, and press [ENTER].

3.9 Remote Control

This chapter shows the basic use of the remote control. For more details, '3.3 Basic Screen Menu', '3.4 Play Video Files', '3.5 Play DVD Files', '3.6 Play Music Files', '3.7 Play Photo Files', '3.8 Make a Play-List'.

POWER: Turn On / Off **SETUP** Go to Setup Screen.
MENU: Go to DVD Main Menu, Display Menu Icon When Playing Video File.
TITLE: Go to DVD Title Menu **ANGLE** DVD Angle, Photo Rotation
REPEAT: Set DVD Chapter, Title Repeat **A-B REPEAT** Set DVD A-B Repeat.
SLOW: Play DVD Slowly.

ENTER: Play a File
▲▼◀▶: Arrow Key . (◀ Return to Up Directory)
FILE INFO: Show File Info.
TIME SEARCH: Jump to Specific play time
Brt.CONT: Set Luminosity, Color Depth, Brightness
MEDIA TYPE: Go to Media Type Selection Screen

VIDEO: Change Video Output Mode
SUBTITLE: Subtitle Settings
Scr. SIZE: Screen Size Settings

MAIN PAGE: Go to Mode Selection Screen.
PLAY/PAUSE: Play next all files
Pause
STOP: Stop Play
REW: Play Faster in Backward.
FF: Play Faster in Forward.
PREV: Go to Previous Page,
Play Previous File in Play All
NEXT: Go to Next Page
Play Next File in Play All

How to Insert/Change Battery

1. Pull out the battery tray of remote controller's body completely.
2. Put the enclosed battery on the tray.
3. Insert the tray into remote controller's body completely.



3.10 Others

3.10.1 Music Slide Show

Make a 'music' folder (in a small letter not a capital letter) in the root directory of built-in HDD and save MP3 files in this folder. If the HDD is divided into two or more partitions, make a 'music' folder at first partition. When you play one or all photo files, you can listen to mp3 and see photo slide show together. However, if you use the device with a networking computer (not built-in HDD), you cannot listen to MP3. In this function, the player only detects MP3 files at built-in HDD's music folder.

3.10.2 MP3 Quick Play

This is for listening to MP3 files without the use of a TV set. Make a 'music' folder (in a small letter not a capital letter) in the root directory of built-in HDD and save MP3 files in this folder. If the HDD is divided into two or more partitions, make a 'music' folder in the first partition. Turn on the player and just press [PLAY/PAUSE] button. The MP3 files at 'music' folder will be played automatically. Additionally, after rebooting the Network MediaPlayer-35 drive in kit, the last played file will continue to play.

However, if you use the device with a networking computer (not built-in HDD), you cannot listen to MP3. In this function, the player only detects MP3 files at built-in HDD's music folder.

3.10.3 Change Background Image

It is possible to change a background image on the player. Select a picture file and save it as 'mybg.jpg' in the root directory of built-in HDD. Background image will be changed as 'mybg.jpg'.

We Recommend to use 720x480 pixels image.

3.10.4 Firmware Upgrade

The firmware of this device can be upgraded. You can find the latest firmware upgrade files at www.freecom.com/support. We recommend you to save the firmware file in a specially created folder, for instance "Firmware". After connecting the device to a TV set, move to the upgrade file and press [ENTER]. Upgrade is progressed automatically.

After finishing upgrade, you can check firmware version on Setup screen. Press [SETUP] button. Do not turn off the power during firmware upgrade !!!

Technical Specifications

Product Name	Freecom Network MediaPlayer-35 Drive-In kit	
Power	5V 1.5A /12V 1.5A	
Weight	450g (without HDD)	
Dimension	57 x 150 x 185 mm	
Available OS	Windows 98/SE/ME/2000/XP, Mac OS X 10.1 or higher, Linux 2.4 or higher	
USB Interface	480Mbps USB 2.0 (USB 1.1 Compatible) / Slave	
Network Interface	10/100 Mbps LAN (RJ-45)	
HDD Type	3.5" IDE HDD	
HDD File System	NTFS / FAT32	
TV Type	PAL / NTSC	
Supported Format	Movie	MPEG 1, 2, 4 (MPG, MPEG, AVI, M2V, DAT, VOB, IFO etc.) DivX, XviD (except GMC, Qpel option applied)
	Music	MP3, OGG Vorbis, WAV, WMA (except WMA9 pro.lossless)
	Photo	JPG(JPEG)
Video Output	COMPOSITE	
	S-VIDEO	
	COMPONENT Y, Pb, Pr (480p, 720p, 1080i Progressive Scan)	
Audio Output	STEREO L-R	
	DIGITAL COAXIAL, OPTICAL (DTS Pass-Through Only)	
Operating Temperature	0°C ~ 60°C	

WARRANTY (valid in Europe/Turkey only):

We thank you for purchasing this Freecom product and hope you will enjoy using it. In order to avoid unnecessary inconvenience on your part, we suggest reading the quick install guide, instruction manual and any additional electronic and or printed manuals. When problems occur we have a database with Frequently Asked Questions (FAQ) on our Freecom website (www.freecom.com), please check this site before you contact the helpdesk.

Your Guarantee

All Freecom products come with unlimited technical phone and web support. By this Guarantee, Freecom warrants their products to be free from defects in material and workmanship for a period listed below from the date of its original purchase. If during this period of guarantee the product proves defective due to improper materials or workmanship, Freecom will, without charge for labour or parts, at its sole discretion, repair or replace the product or its defective parts upon the terms and conditions set out below.

Conditions

This guarantee will be granted only when the original invoice or sales receipt (indicating the date of purchase, product and serial number) is presented together with the defective product and a Freecom RMA number received from the Freecom Website or given by a Freecom Service Center. Freecom reserves the right to refuse the free-of-charge guarantee services when the date of purchase of the product cannot be proven. This guarantee will not apply if the RMA number is missing, the serial number on the product has been altered, removed or made illegible.

This guarantee covers only the hardware components packaged with the product. This guarantee covers none of the following: (a) any consumable supplied with the product, such as media or batteries; (b) damage to or loss of any software programs, data or removable storage media; (c) any damage resulting from adaptations, changes or adjustments, which may have been made to the product, without the prior written consent of Freecom; (d) attempted repair by any party other than authorized by Freecom and (e) accidents, lightning, water, fire or any other such cause beyond the reasonable control of Freecom.

With respect to all services provided, Freecom is not responsible for any damage to or loss of any programs, data or other information stored on any media or any part of any product serviced. Freecom is not liable for the consequence of business loss in case of system failure. Be sure to exclude all parts not covered by this guarantee prior to returning the product to Freecom. Freecom is not liable for any loss or damage to these items. If during the repair of the product the contents of the hard drive are altered, deleted or in any way modified, Freecom is not liable whatsoever.

Repair parts and replacement products will be provided on an exchange basis and will be either new, equivalent to new or reconditioned. All replaced parts and products become the property of Freecom. The period of guarantee for any product or part repaired or replaced in warranty shall be the balance of the original guarantee. Repairs or replacements on product or parts out of warranty carry **6 (six)** months guarantee.

All Freecom products come with unlimited free technical phone and web support.

Freecom Product	Warranty period
Traveller & Portable	1 year (Two years in Europe)
Classic & Internal Series	1 year (Two years in Europe)
FC, FS & FX Series	1 year (Two years in Europe)
FHD Series & FireWire Harddrive	1 year (Two years in Europe)
MediaPlayer-XXX	1 year (Two years in Europe)
DVB-T USB Stick	1 year (Two years in Europe)
USB Floppy Disk Drive	1 year (Two years in Europe)
USBCard (Pro)	1 year (Two years in Europe)
USB 2.0 CardReader	1 year (Two years in Europe)
DAT & LTO Drives (retail)	3 years
DAT-S Kits	2 years
ThinServer*	1 year (Two years in Europe)
Beatman	1 year (Two years in Europe)
Cables	1 year (Two years in Europe)

* Controller inside 3 years after online registration only.

(GB)